

# **Creative Solutions to Improve Walking & Biking in Memphis**

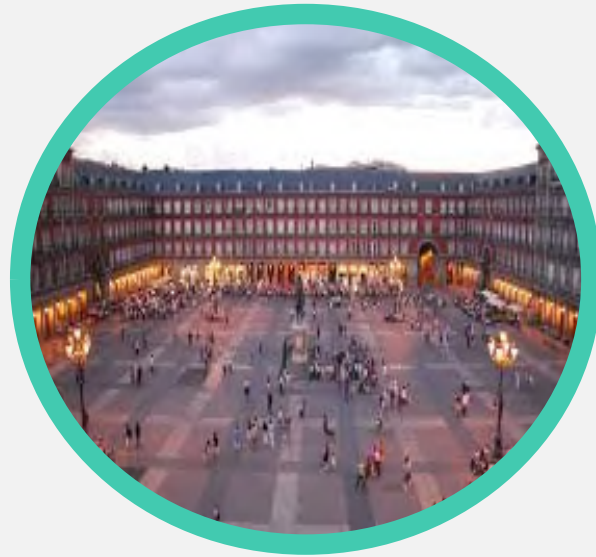


**Nicholas Oyler**

**City of Memphis**

**Bikeway & Pedestrian Program**







# What is Memphis' largest public space?



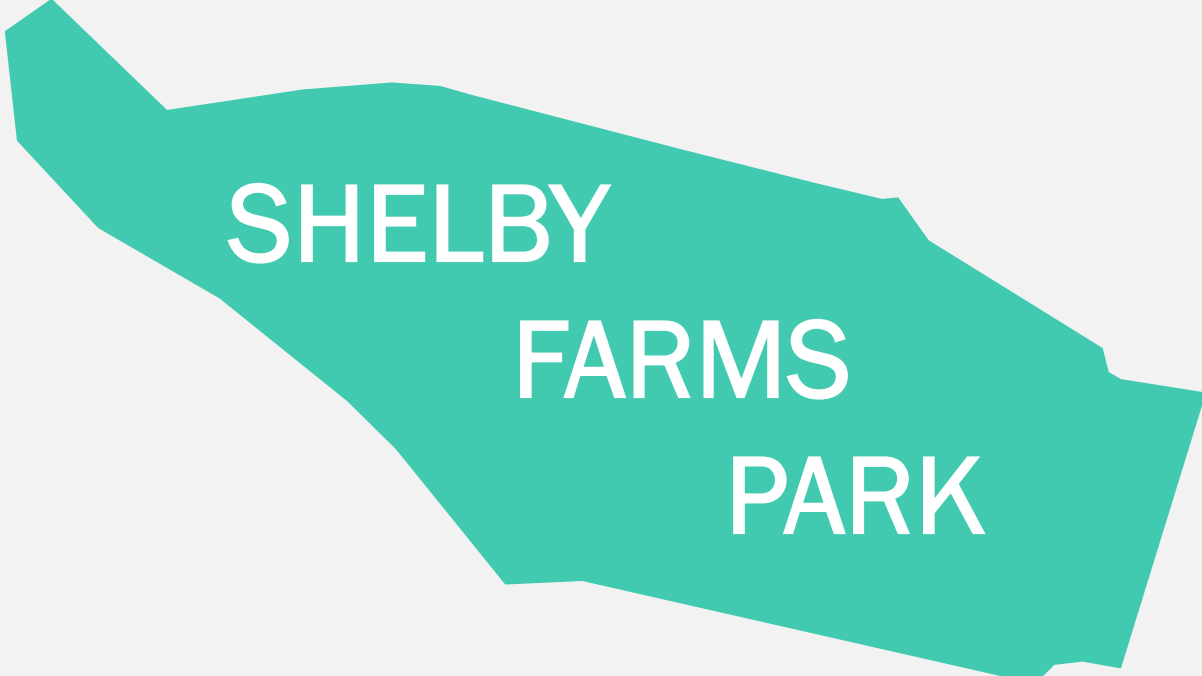
FEDEX  
FORUM

**14**  
acres



OVERTON  
PARK

**342**  
acres



SHELBY  
FARMS  
PARK

**4,500**  
acres



# OUR STREETS

**15,500+**  
**acres**





**Our Streets**

**=**



**3.5x**

**Shelby Farms Park**

# TRAFFIC CRASH FATALITIES IN MEMPHIS

2018



2019



Source: Memphis Police Department



# TRAFFIC CRASH FATALITIES IN MEMPHIS

2020



Source: Memphis Police Department



# TRAFFIC CRASH FATALITIES IN MEMPHIS

2021



Source: Memphis Police Department

## Comparing Crash Fatalities and Murders in the Principal Cities of America's 50 Largest Metropolitan Areas (2019)

Fatalities per 100,000 population

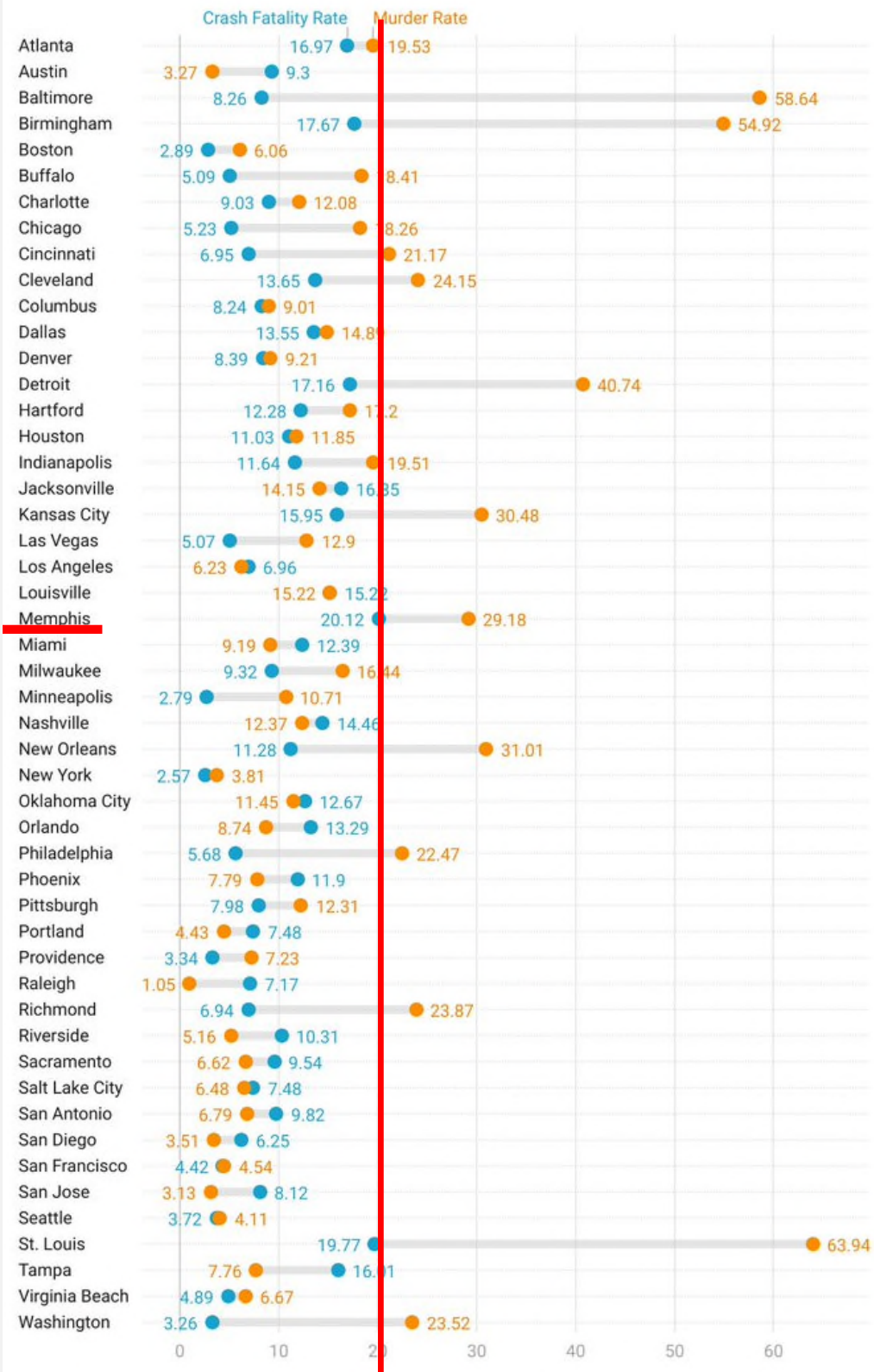


Source: Federal Bureau of Investigation, "Crime in the United States," Table 6; National Highway Traffic Safety Administration, "Traffic Safety Facts: A Compilation of Motor Vehicle Crash Data," Table 124 • Created with Datawrapper



## Comparing Crash Fatalities and Murders in the Principal Cities of America's 50 Largest Metropolitan Areas (2019)

Fatalities per 100,000 population



Source: Federal Bureau of Investigation, "Crime in the United States," Table 6; National Highway Traffic Safety Administration, "Traffic Safety Facts: A Compilation of Motor Vehicle Crash Data," Table 124 • Created with Datawrapper



## Memphis is the Most Dangerous Place to Walk

Bluff City had the highest fatality rate in the country in 2018 according to federal traffic data.

By Aaron Short | Oct 29, 2019 |  9 COMMENTS



Memphis has one of the highest pedestrian fatality rates in the country thanks to distracted drivers and a network of roads that aren't safe for pedestrians. Image: Eric Allix Rogers

## THE TOP 20

### Most dangerous metropolitan areas for pedestrians (2010-2019)

● Top 1-10 ● Top 11-20

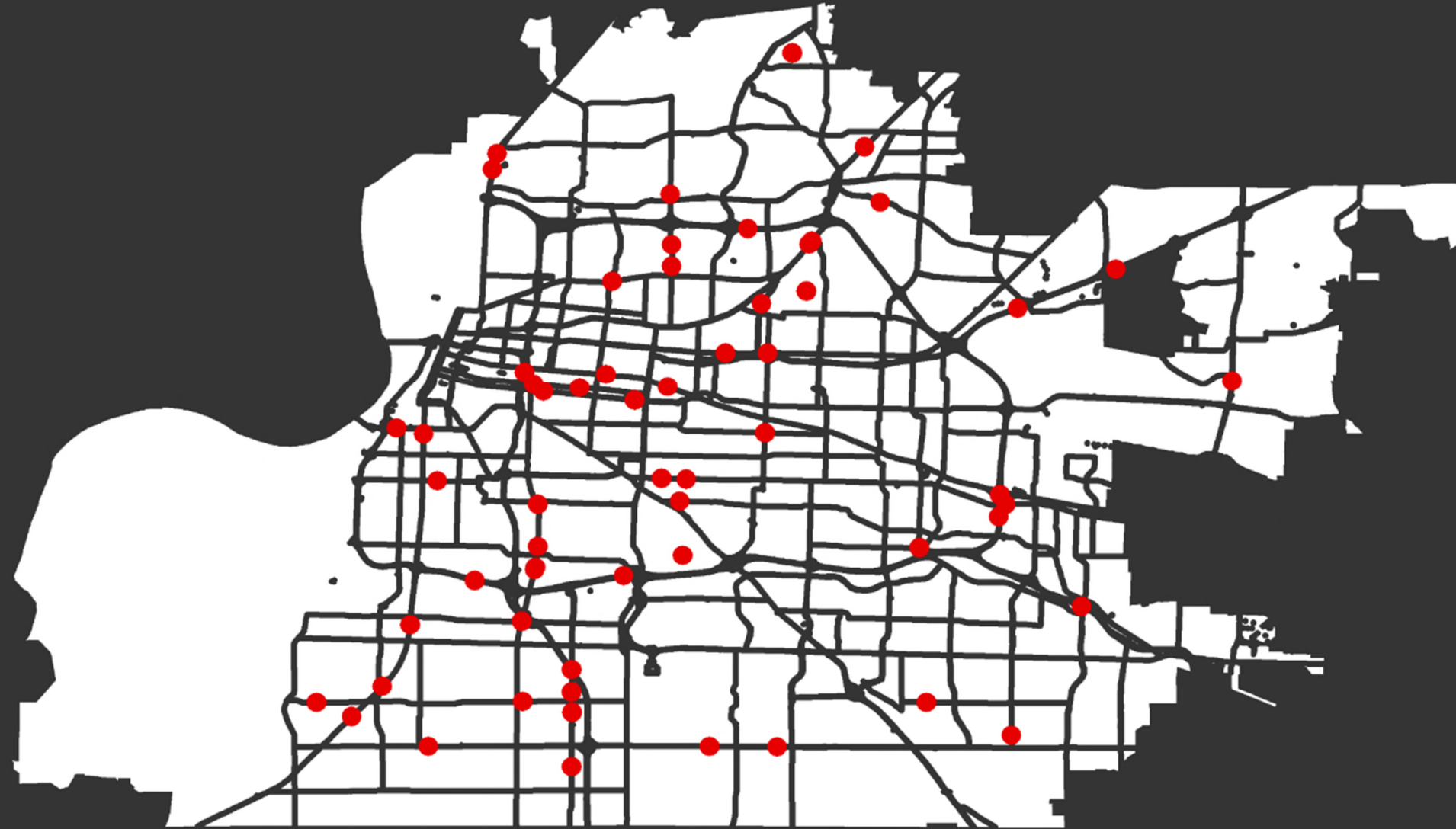


Search:

Rank	Metropolitan statistical area	Pedestrian fatalities (2010-2019)	Average annual pedestrian fatalities per 100,000 (2010-2019)	Pedestrian Danger Index
1	Orlando-Kissimmee-Sanford, FL	740	3	295
2	Bakersfield, CA	260	2.9	293
3	Memphis, TN-MS-AR	350	2.6	261
4	Palm Bay-Melbourne-Titusville, FL	168	2.9	260.9

# IN MEMORIAM

## Those Who Died from a Traffic Crash while Walking or Bicycling in 2021



Akenya C. (20)	Bradley B. (50)	Danny J. (63)	Gary W. (56)	Joseph P. (32)	Michelle R. (52)	Sean W. (37)
Alandus K. (35)	Canan S. (23)	Darris F. (31)	Hank C. (35)	Juanita F. (40)	Moaz M. (34)	Shanequa W. (34)
Ali A. (17)	Carey S. (54)	Darryl H. (56)	Horace R. (62)	Julian H. (52)	Muthyala R. (68)	Sharon S. (64)
Aretha W. (54)	Charles C. (50)	Deivory M. (39)	Howard G. (68)	Ka'narhey W. (14)	Nicklos A. (20)	Shelia V. (55)
Ava B. (1)	Charles P. (64)	Delanders R. (63)	Ida B. (61)	Kayla W. (68)	Ocie B. (75)	Timothy G. (66)
Barion I. (30)	Charlie H. (65)	Erica W. (38)	James M. (68)	Kevin F. (30)	Paul B. (60)	Trasiah W. (5)
Betty S. (71)	Charlie D. (50)	Erwin H. (64)	Jeremiah D. (35)	Lecharles B. (29)	Ronald H. (53)	Vera J. (42)
Bobbie G. (66)	Christian W. (14)	Felix K. Jr. (22)	Jesse Y. Jr. (39)	Marvin O. (56)	Roy M. (3)	Wilbur A. (26)
Bobby B. (63)	Christopher B. (37)	Freddie R. (71)	Johnny R. (62)	Michael S. (56)	Sahja A. (21)	



HOW EXTENSIVE IS THE PROBLEM?

OVER **250 MILES** OF ROADS WITH INCOMPLETE SIDEWALKS & **750 MILES** OF NON-HIGHWAY ROADS WITH NO SIDEWALKS



**80-95%** OF SIDEWALKS REQUIRE REPAIR

These sidewalks do not meet current standards for accessibility.



OF SIDEWALKS REQUIRE **IMMEDIATE REPAIR**

Additional 13% of sidewalks (446 miles) are less than standard width allowed for proper wheelchair access

Sidewalk Gaps



Sidewalk Obstructions



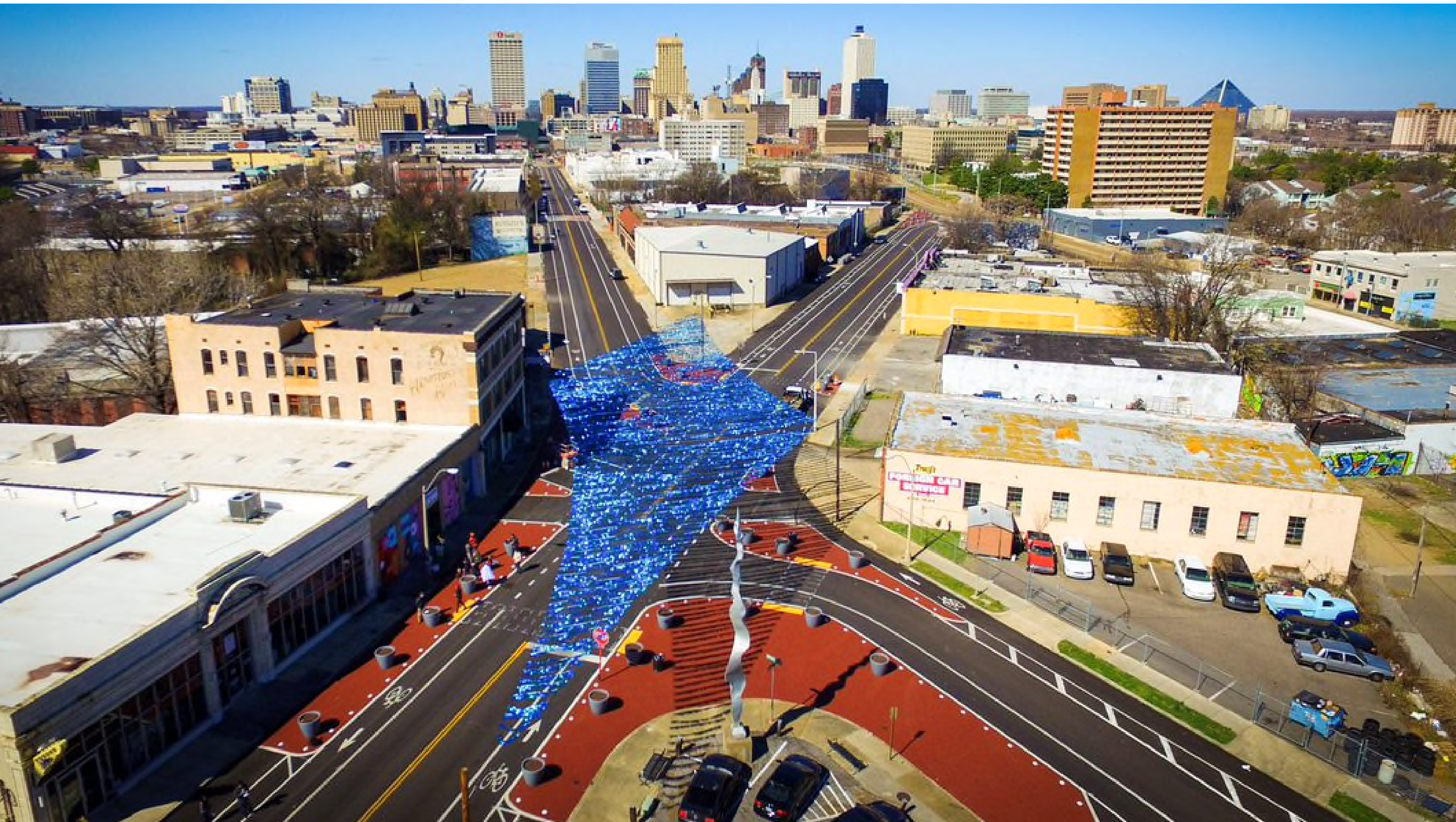
Sidewalk Condition















19

HSC

HSC







HEIGHTSline

community artwork project

heightsline.com



















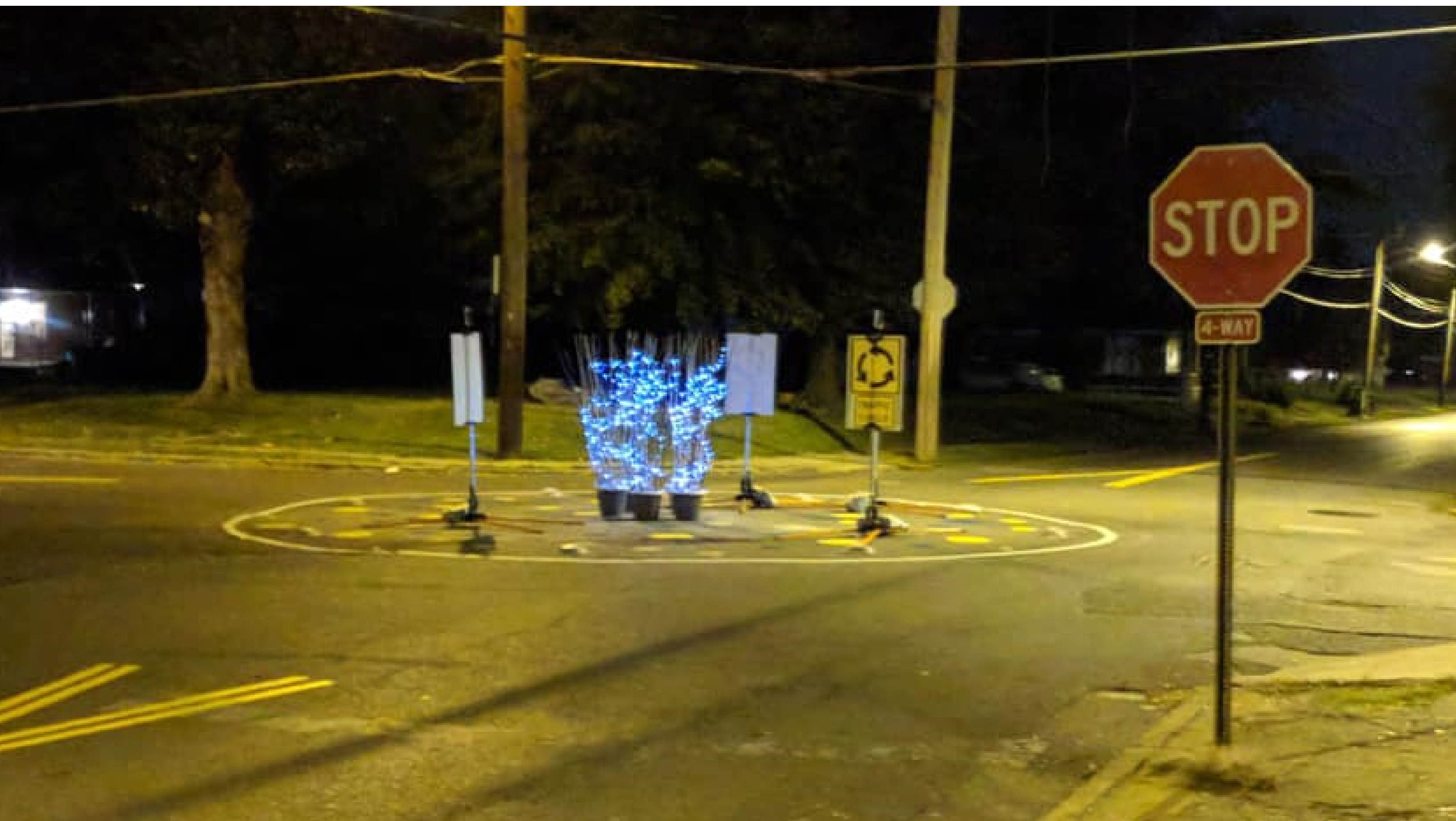


TRAFFIC CIRCLE

TRAFFIC CIRCLE

WALKER W  
WELLINGTON W









# TRAFFIC CIRCLE

It slows down traffic by making vehicles change directions of travel through an intersection, reduces T-bone collisions, and presents a beautification opportunity.



This is a temporary, one-month traffic calming demonstration by the City of Memphis' Division of Engineering and The Works, Inc. that will be removed in the first week of December 2018. Permanent improvements will be made to Walker Ave. in 2019 depending on the demonstration's results and residents' input. For questions or feedback, contact Nicholas Oyler with City Engineering (636-6710).















901

FEEL BETTER MOVE





TURNING VEHICLES →  
TO

SPEED LIMIT  
WHEN FLASHING



**THANK  
YOU!**



  @BikePedMemphis