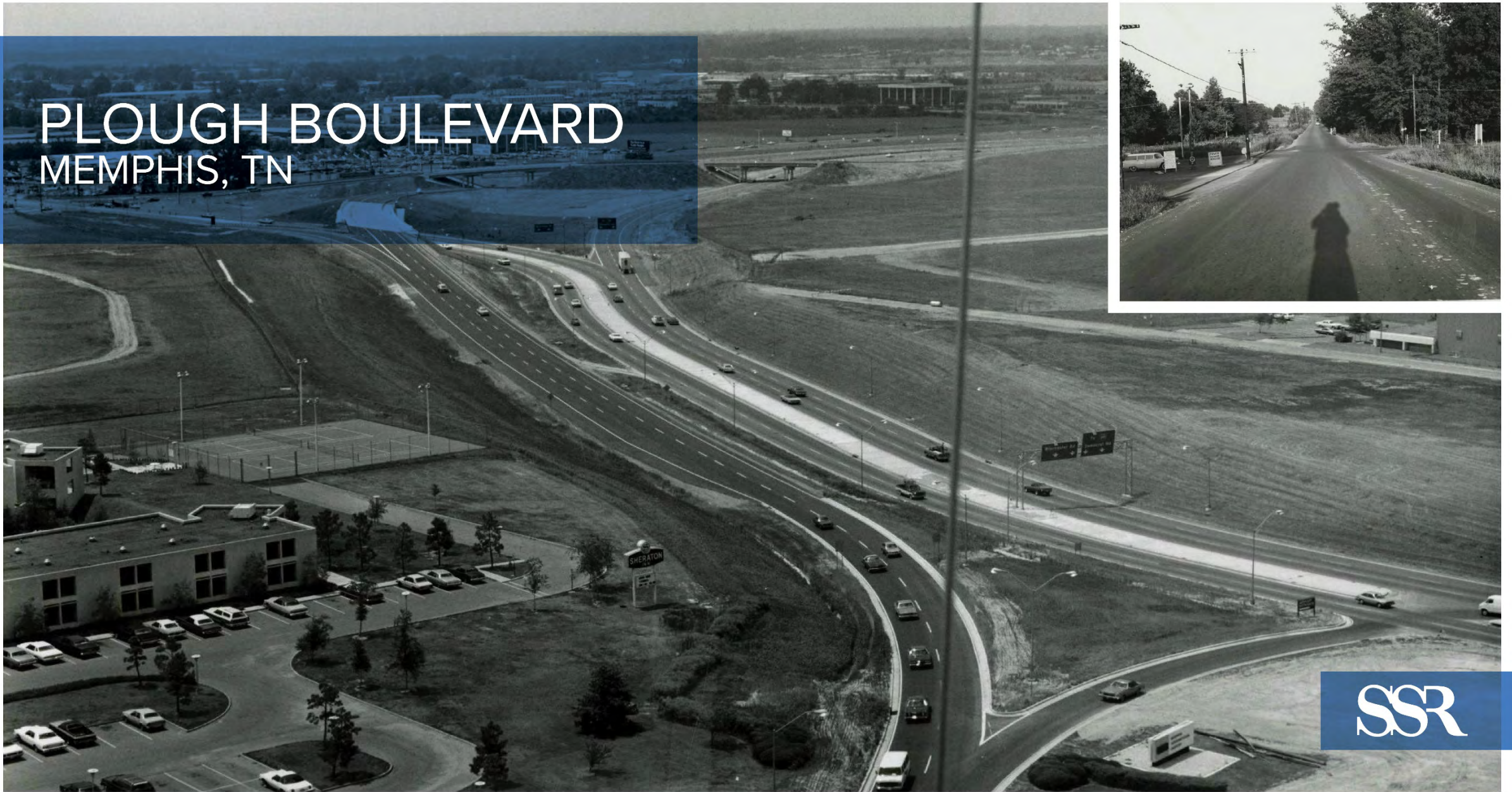


PLOUGH BOULEVARD

MEMPHIS, TENNESSEE



PLOUGH BOULEVARD MEMPHIS, TN



SSR



PLOUGH BOULEVARD MEMPHIS, TN

SSR

MEMPHIS LONG-RANGE TRANSPORTATION PLAN



Memphis Long-Range
Transportation Plan

Figure 5.3A

Congested Corridors

Level of Service

- LOS F
- LOS E
- LOS D

- Freeway
- Principal Arterial
- Minor Arterial
- Other Streets
- Railroad

- MPO Boundary
- County Boundary

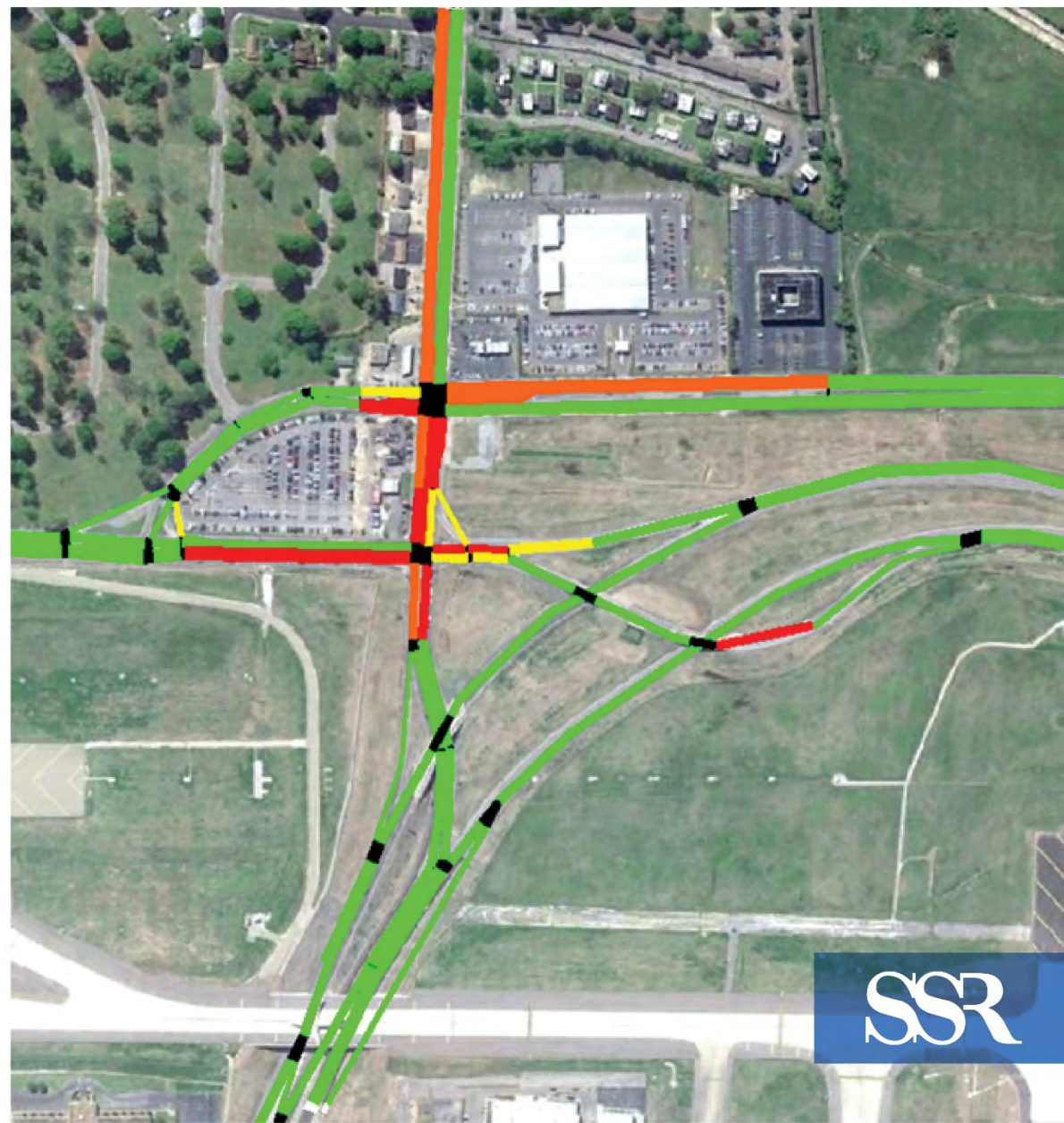
- Municipality
- Body of Water
- Airport



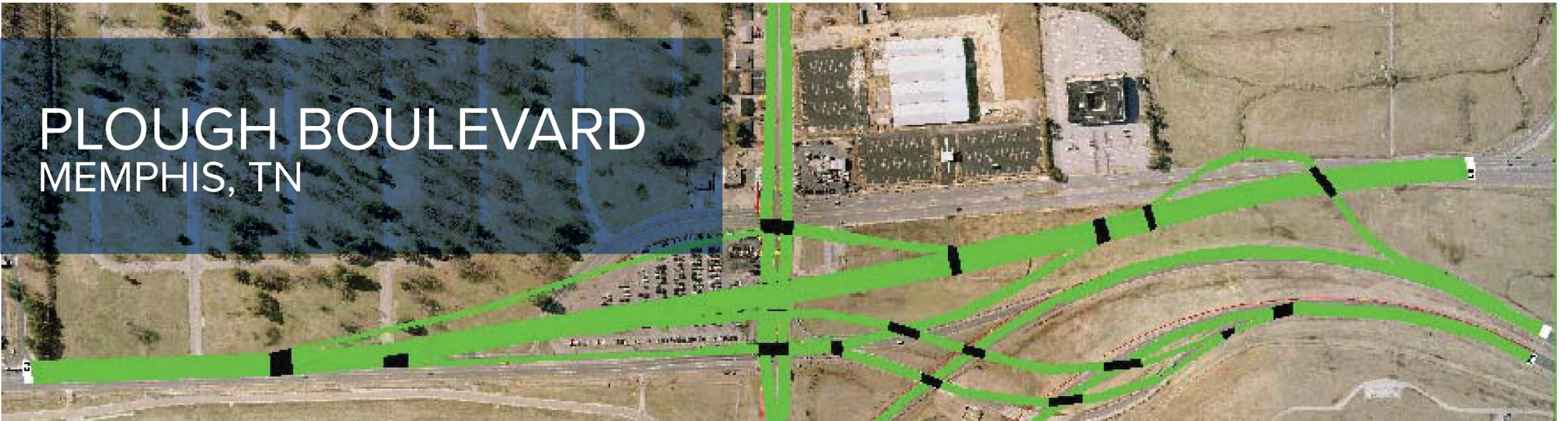
BUSIEST CARGO AIRPORTS

Rank	Airport	Cargo Loaded & Unloaded (Metric Tons)	Percent Change
1	Hong Kong International Airport (HKG)	5,120,811	1.4%
2	Memphis International Airport (MEM)	4,470,196	3.1%
3	Shanghai Pudong International Airport (PVG)	3,768,573	-1.5%
4	Incheon International Airport (ICN)	2,952,123	1.0%
5	Ted Stevens Anchorage International Airport (ANC)	2,806,743	3.5%

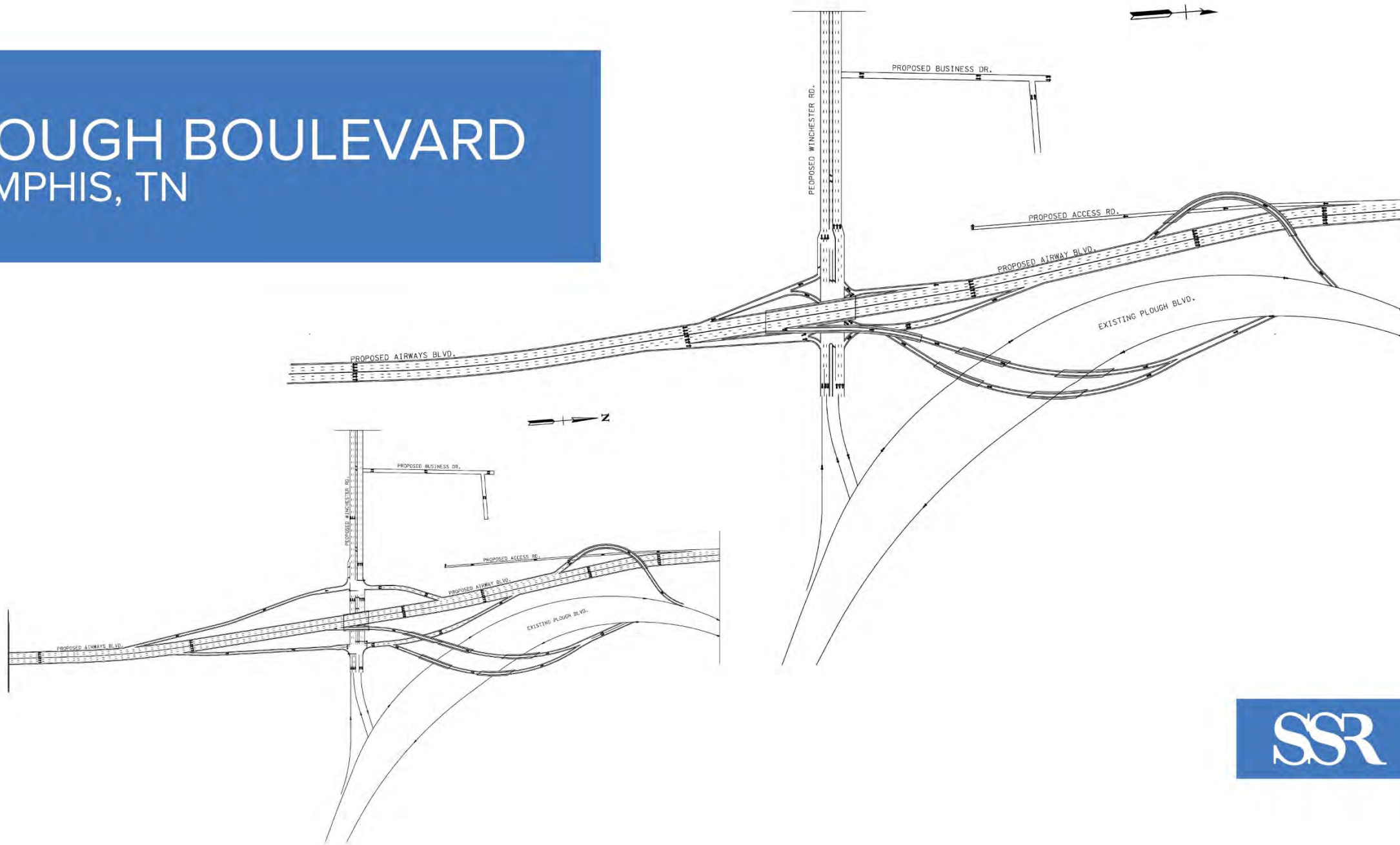
PLOUGH BOULEVARD MEMPHIS, TN



PLOUGH BOULEVARD MEMPHIS, TN



PLOUGH BOULEVARD MEMPHIS, TN



DESIGN CONSIDERATIONS



PROJECT VICINITY



21,144

14,471

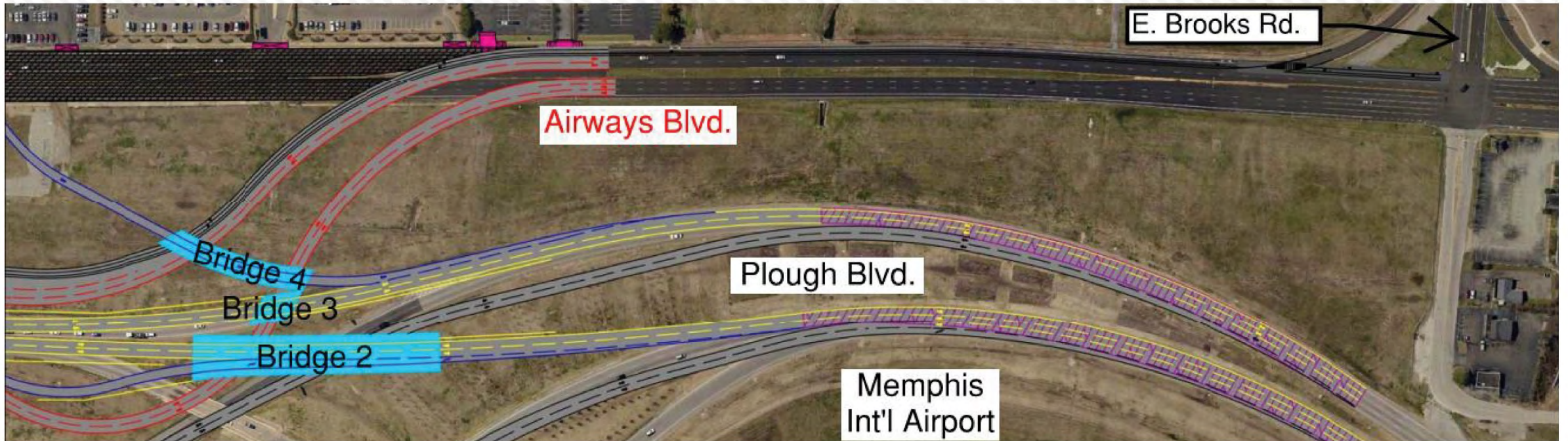
49,489

29,807

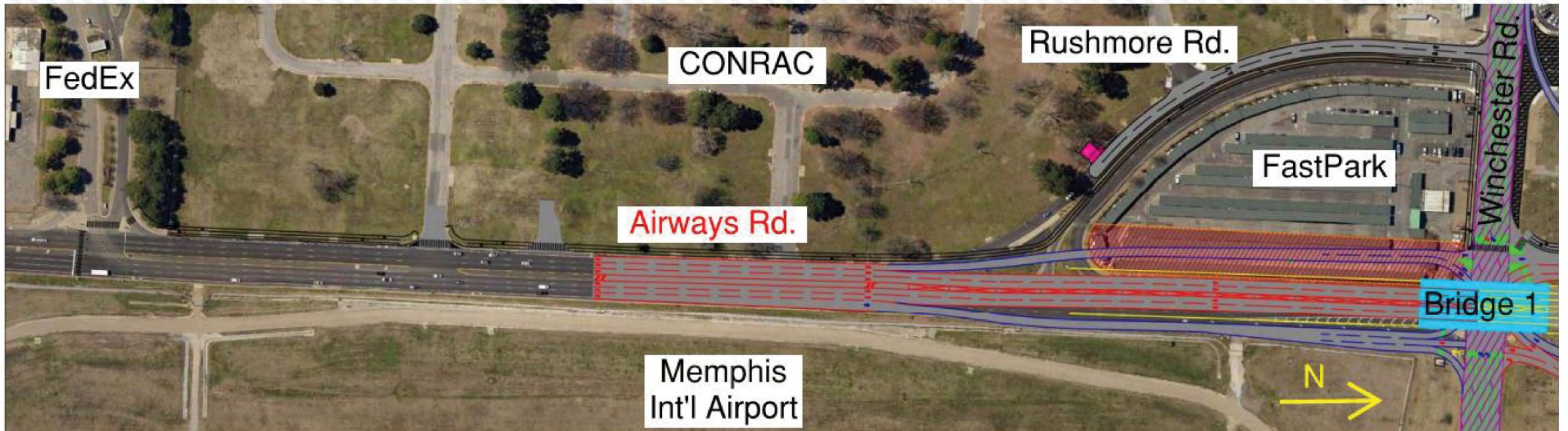
43,925



PROPOSED CONSTRUCTION



PROPOSED CONSTRUCTION



SPUI CONFIGURATION

- Provides uninterrupted traffic flow from Plough Blvd. to Airways Road
- SPUI maintains access from Plough Blvd. via ramps to Winchester Road, Airways Blvd. and Airways Road
- Bicycle/pedestrian facilities accommodated at west end of intersection
- Existing intersection configuration experiences ~70 crashes per year



SHARED USE PATHS

- Shared-use paths on Airways Blvd. and Winchester Road will require barrier separation due to high speeds and right-of-way limitations.
- All shared-use paths will meet TDOT separation requirements.
- Airways Road will be offset without barrier



FAST PARK R.O.W.

CONRAC

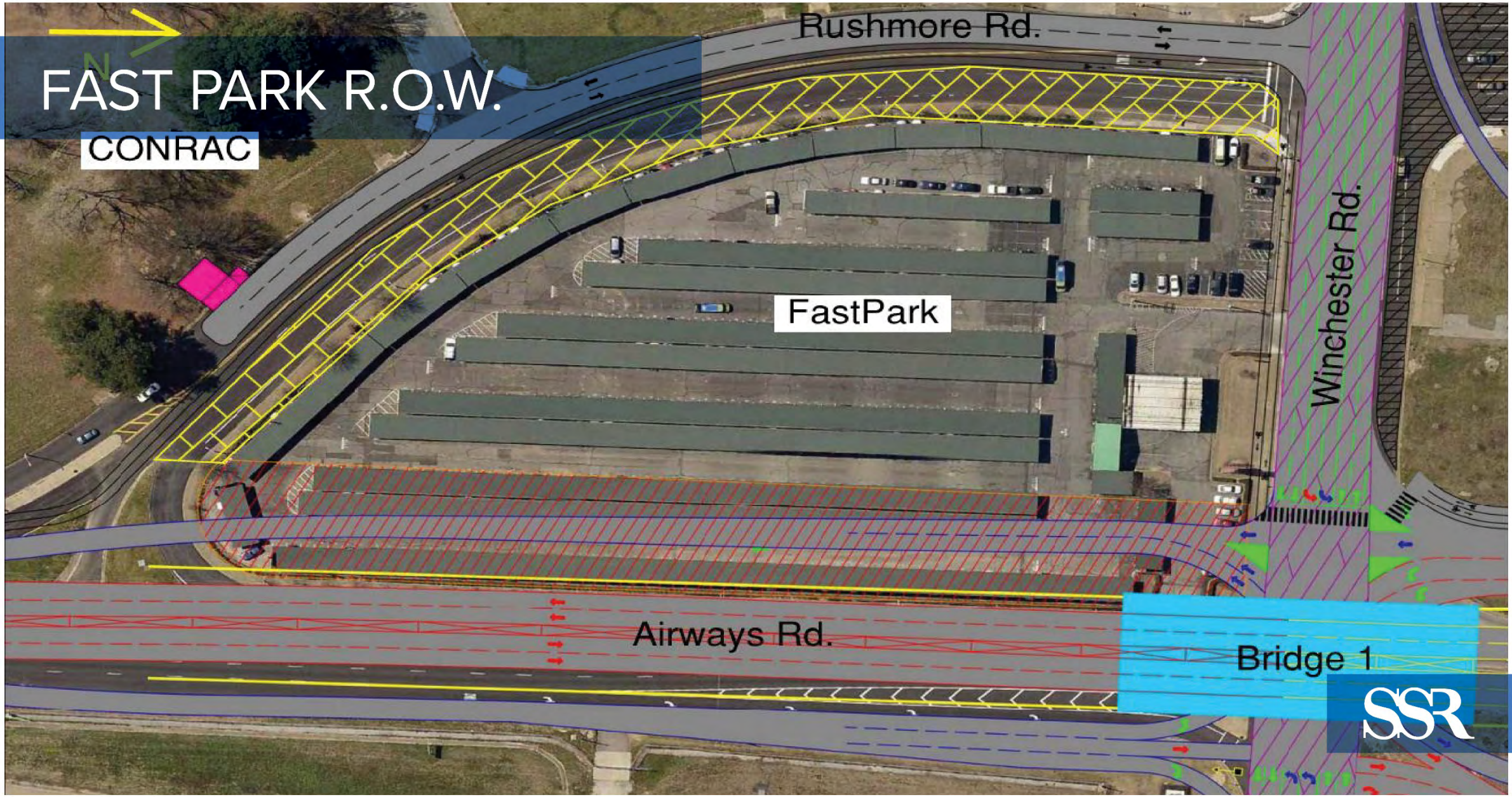
Rushmore Rd.

FastPark

Winchester Rd.

Airways Rd.

Bridge 1



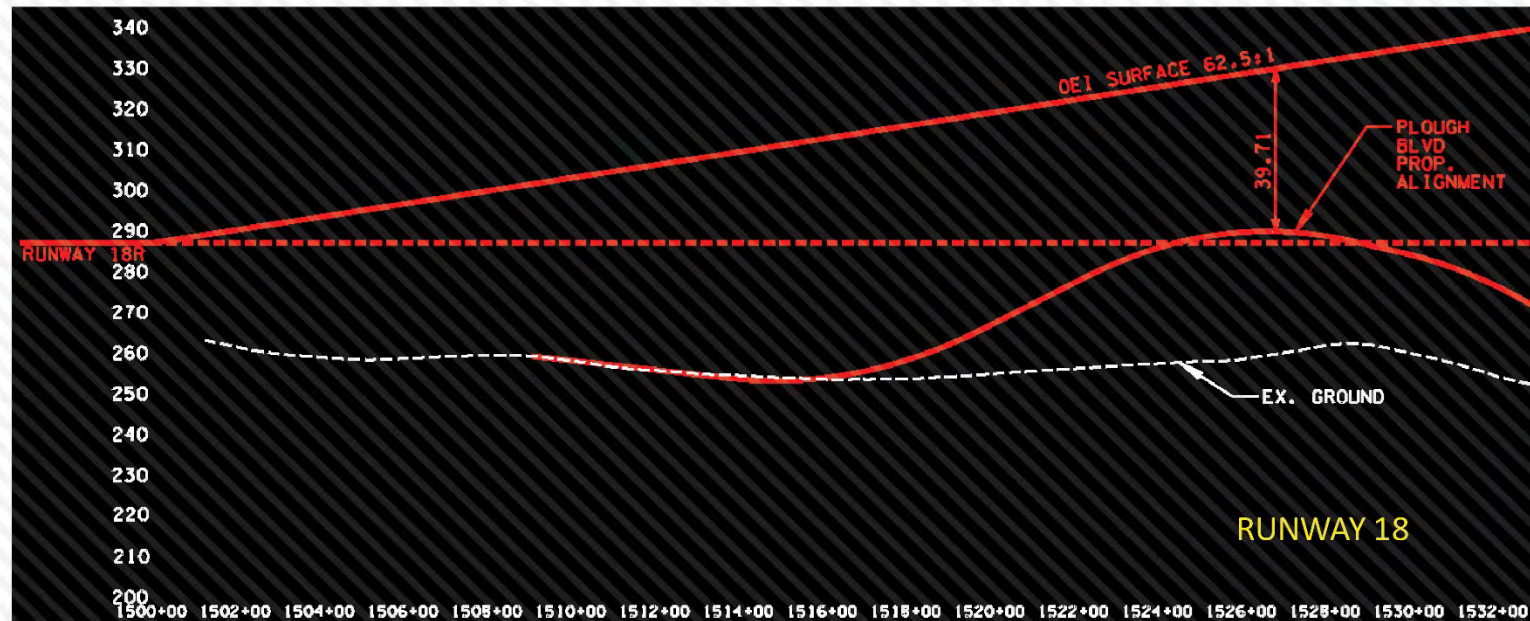
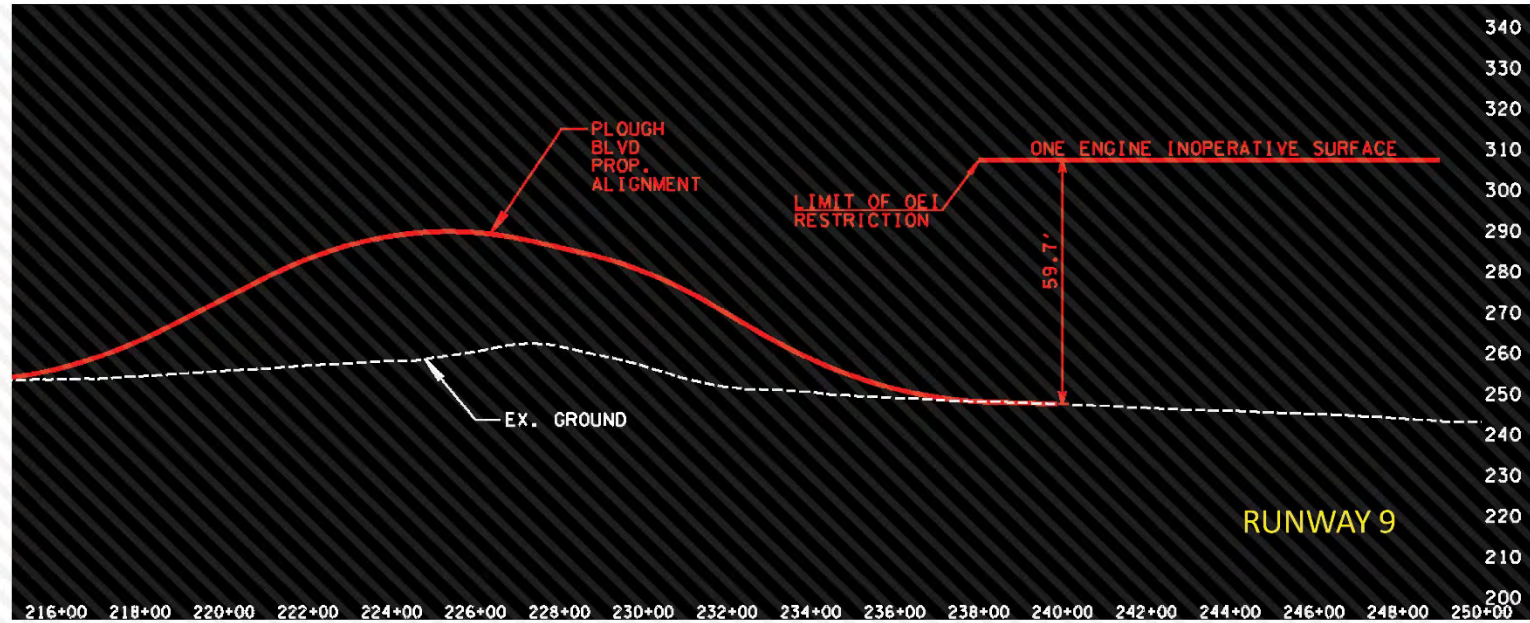
PROJECT CONSTRAINTS



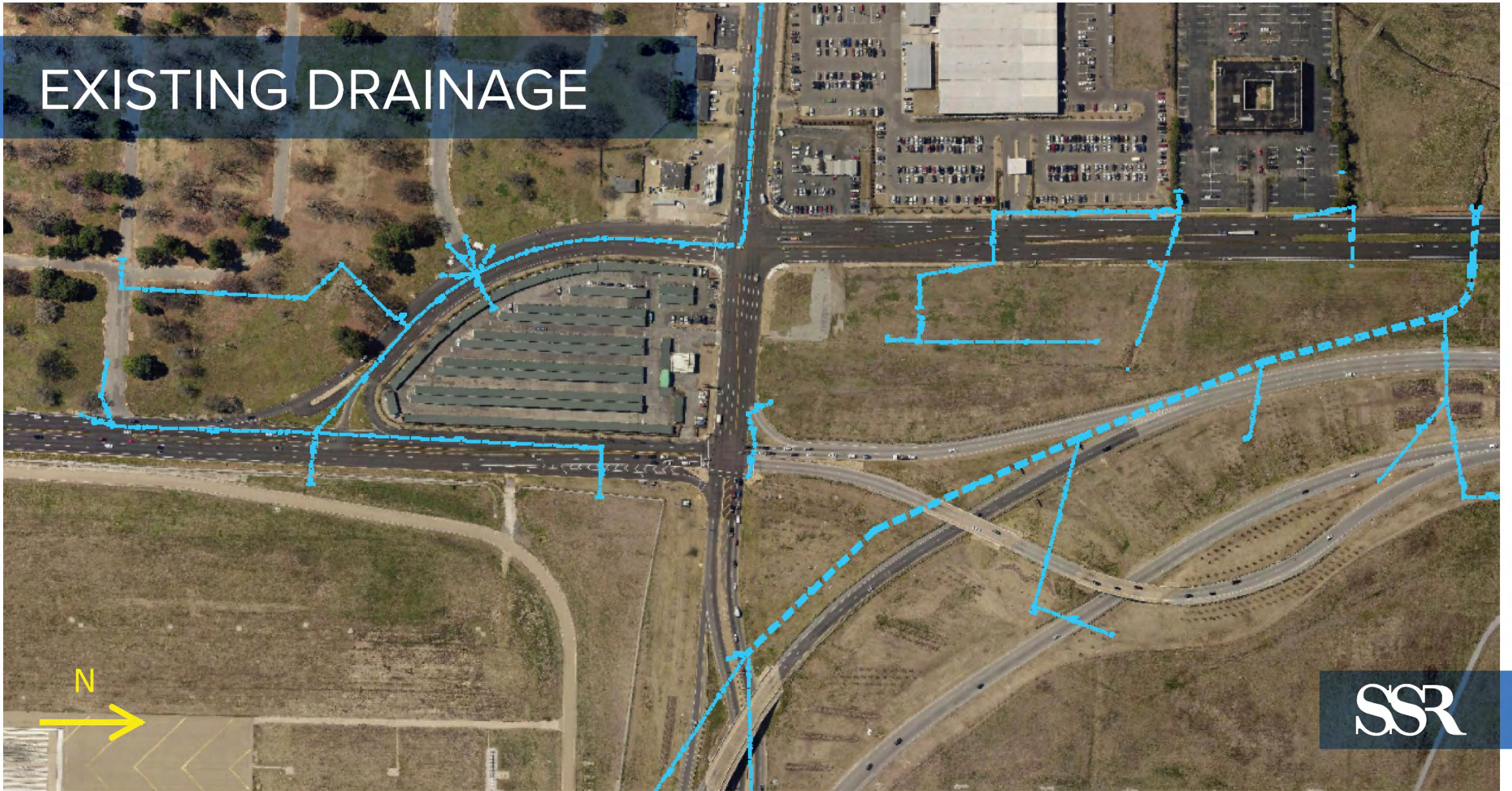
RUNWAY 9 FLIGHT PATH



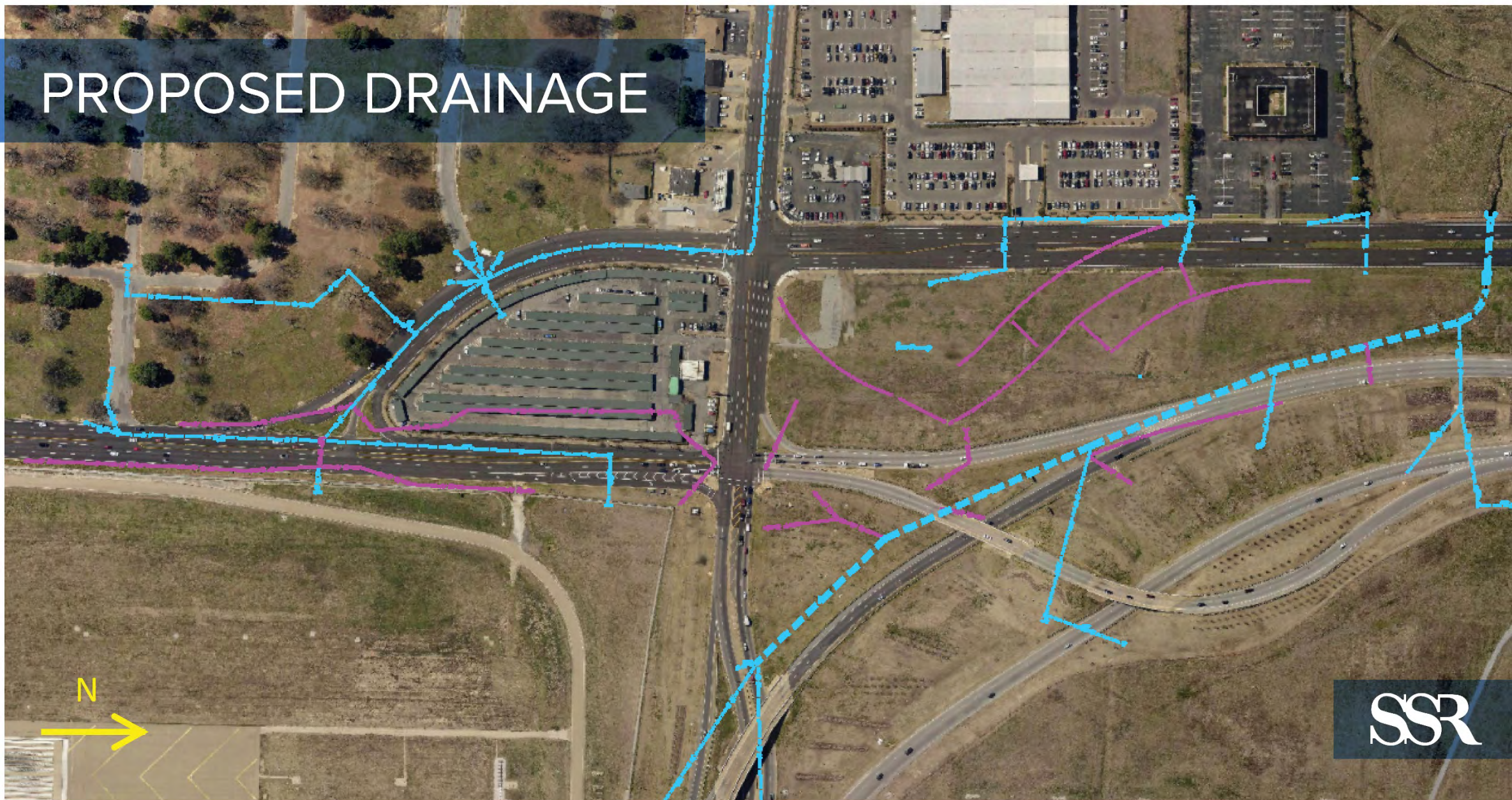
FLIGHT PATH & PROPOSED PROFILES



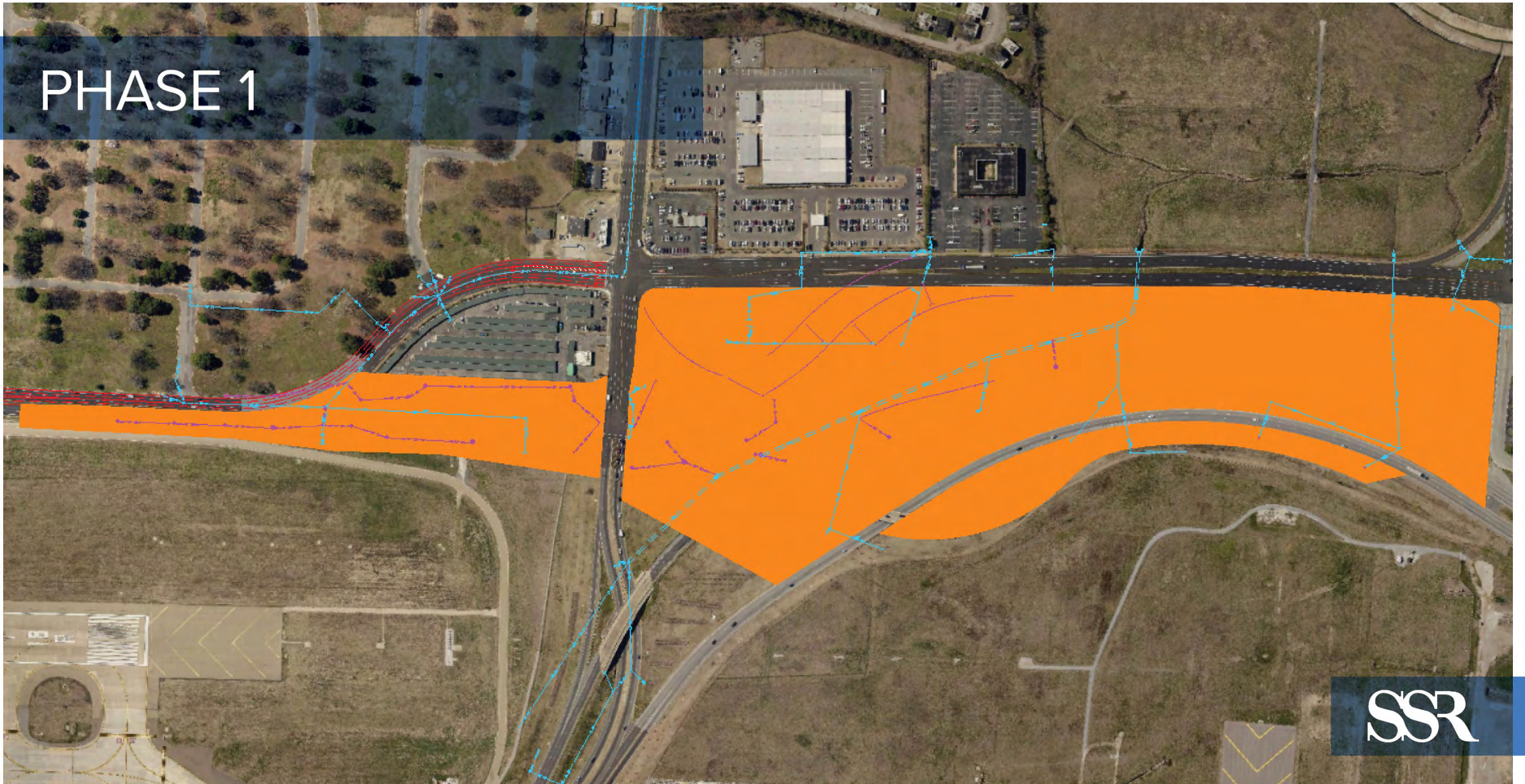
EXISTING DRAINAGE



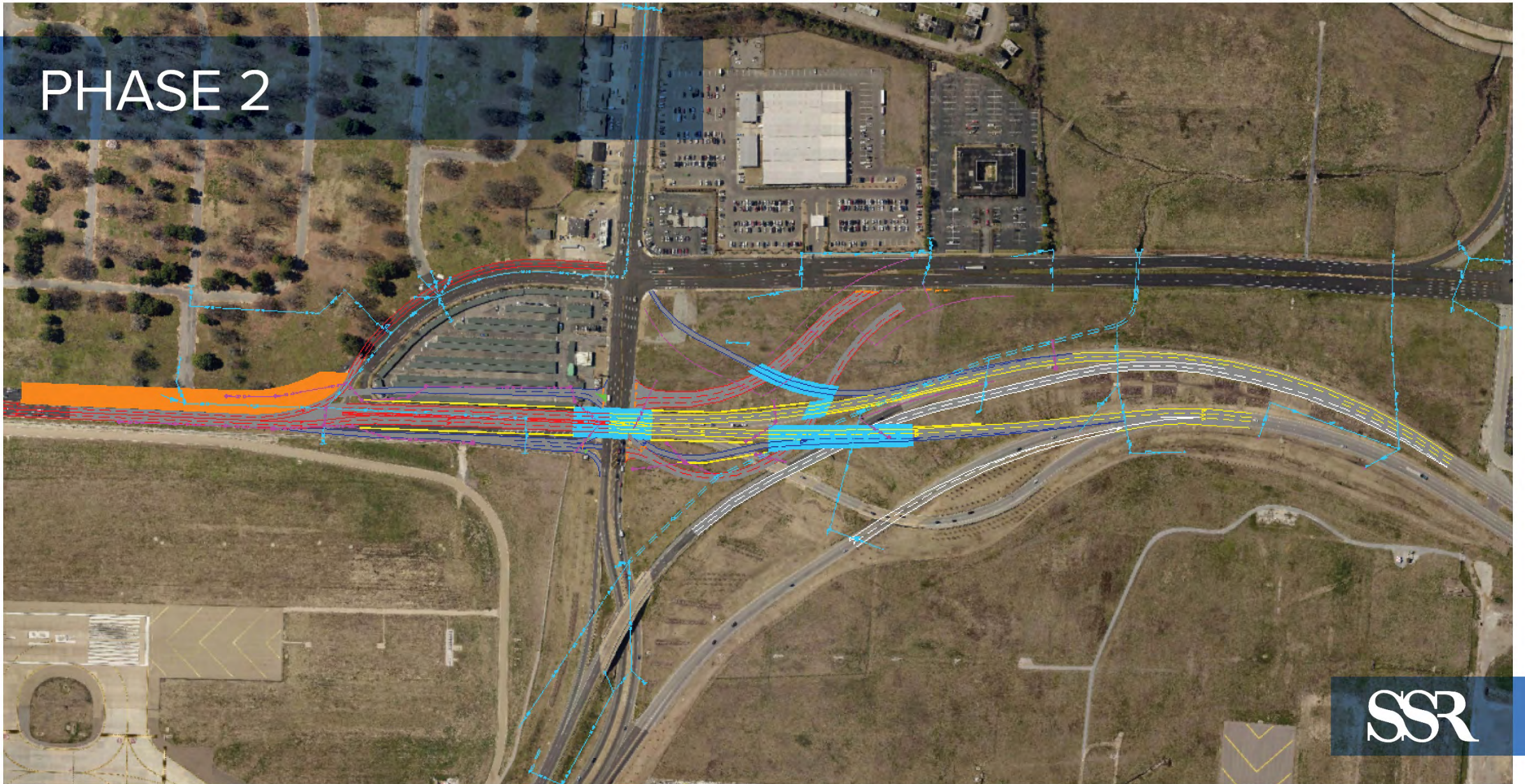
PROPOSED DRAINAGE



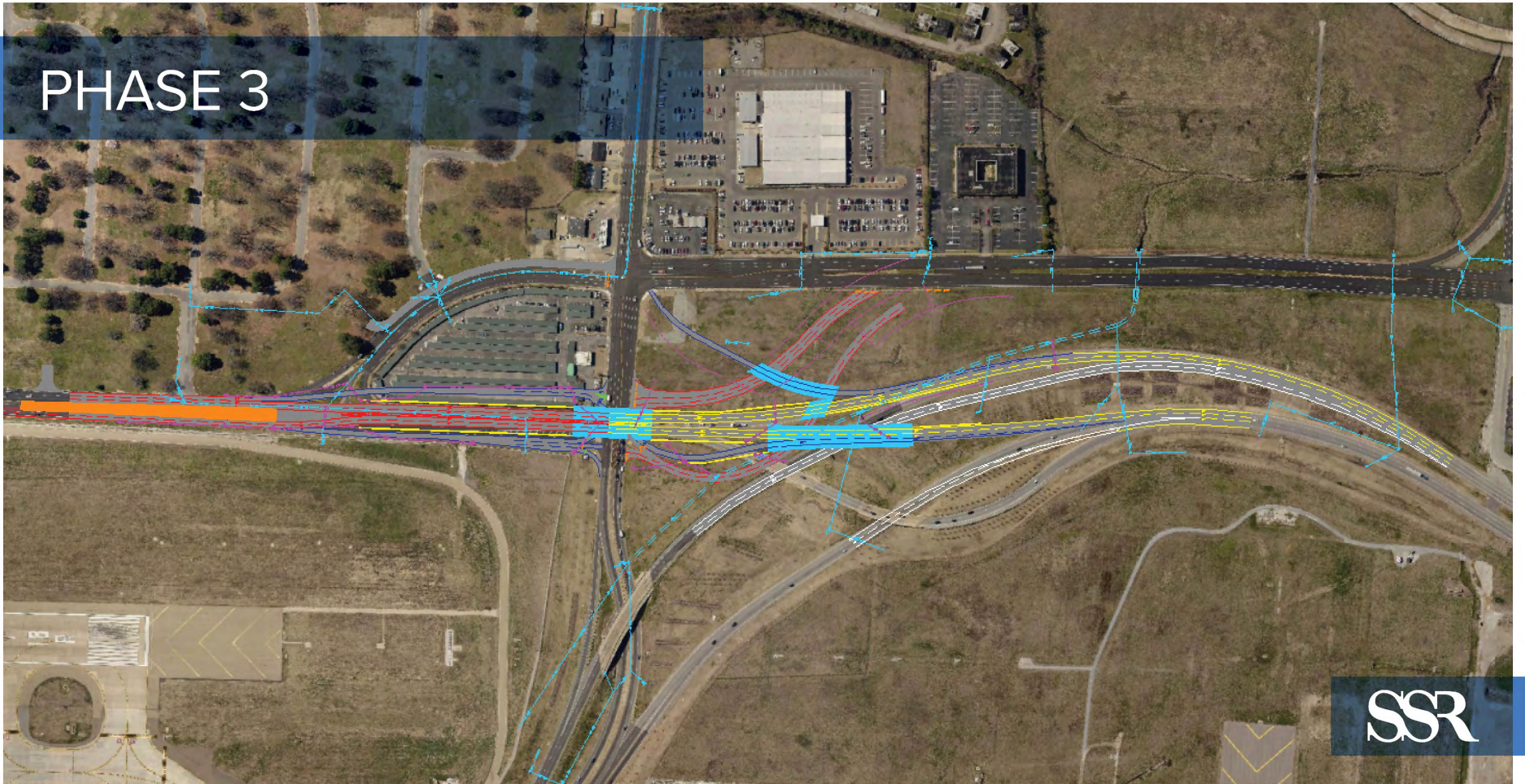
PHASE 1



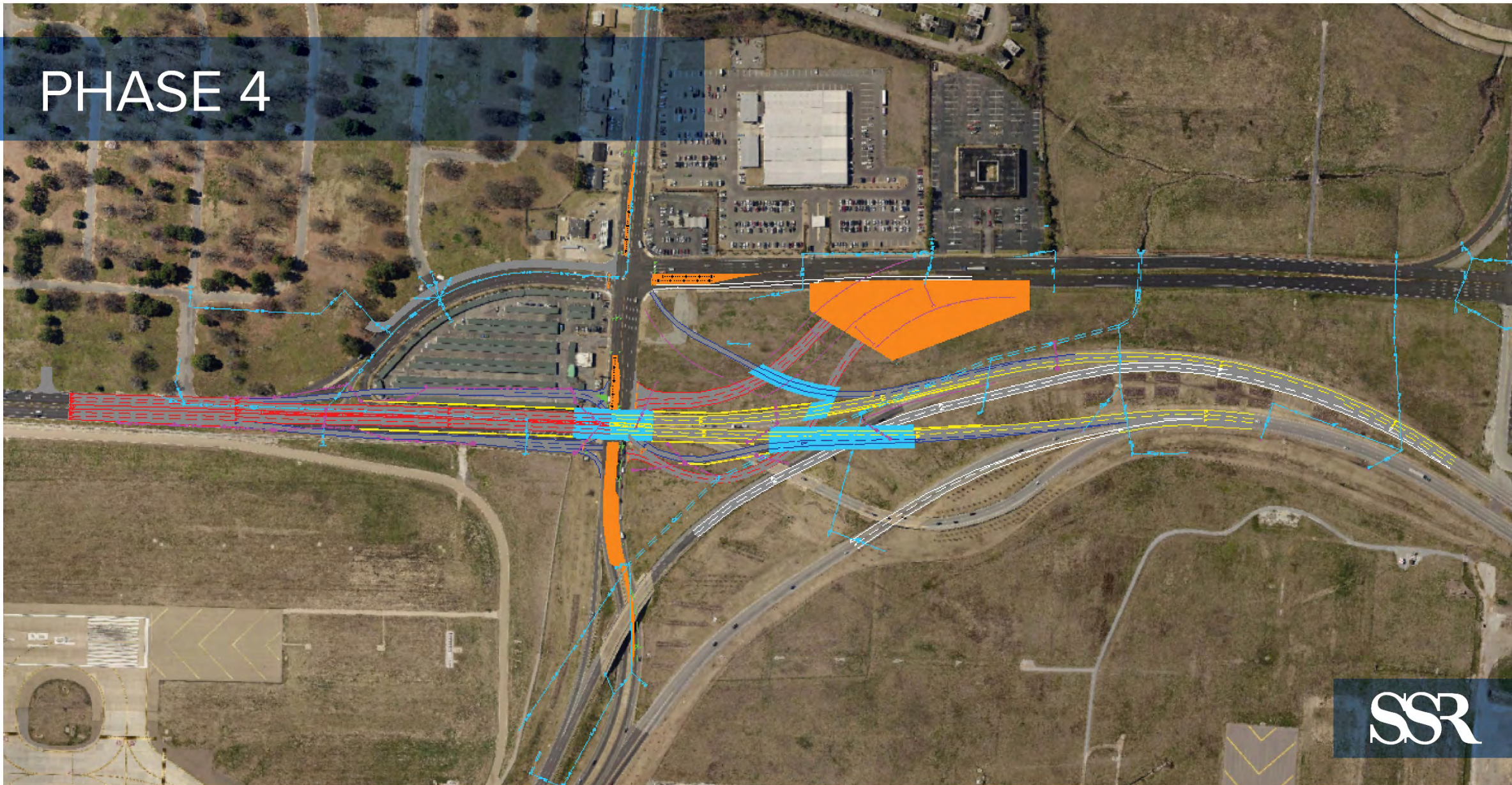
PHASE 2



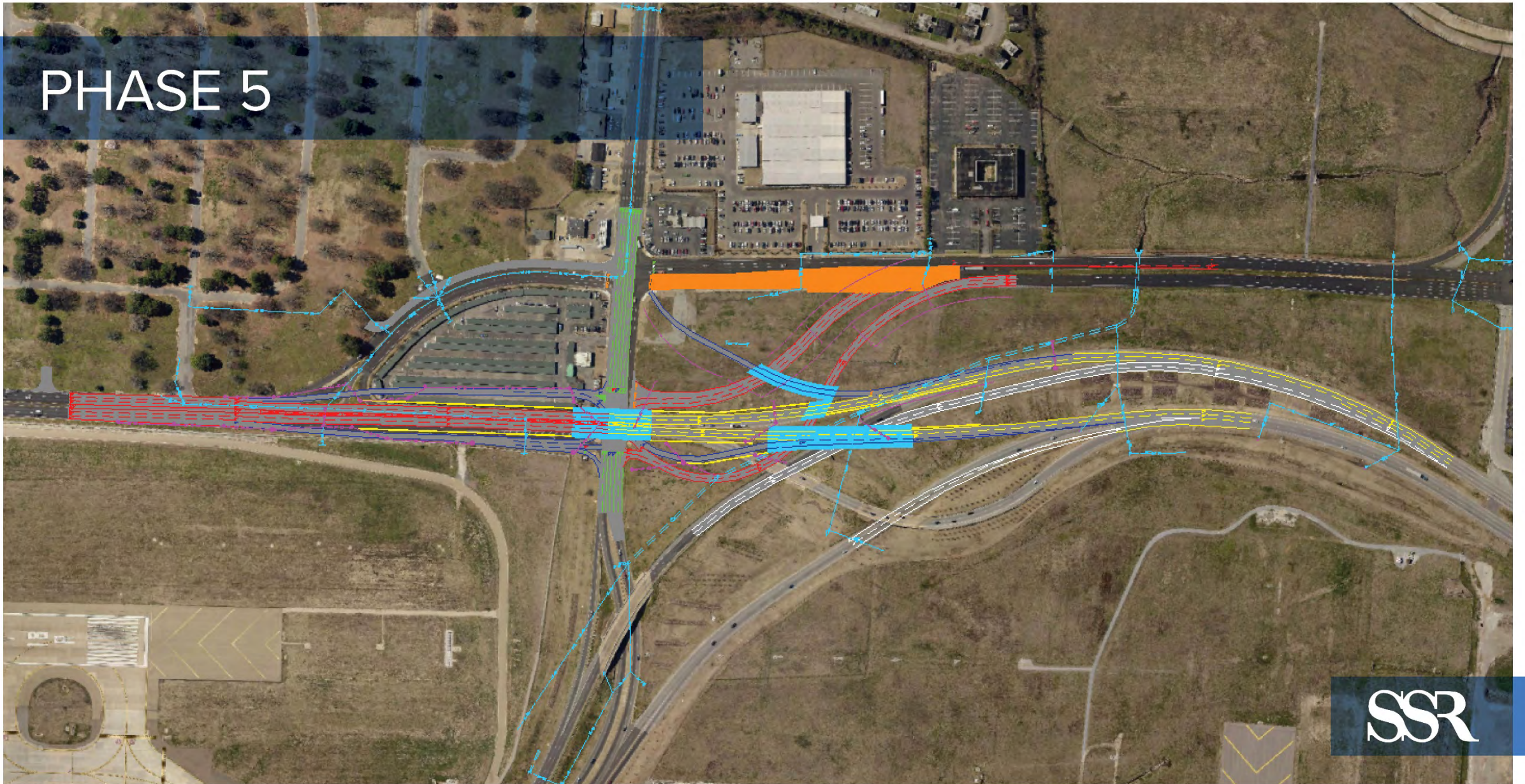
PHASE 3



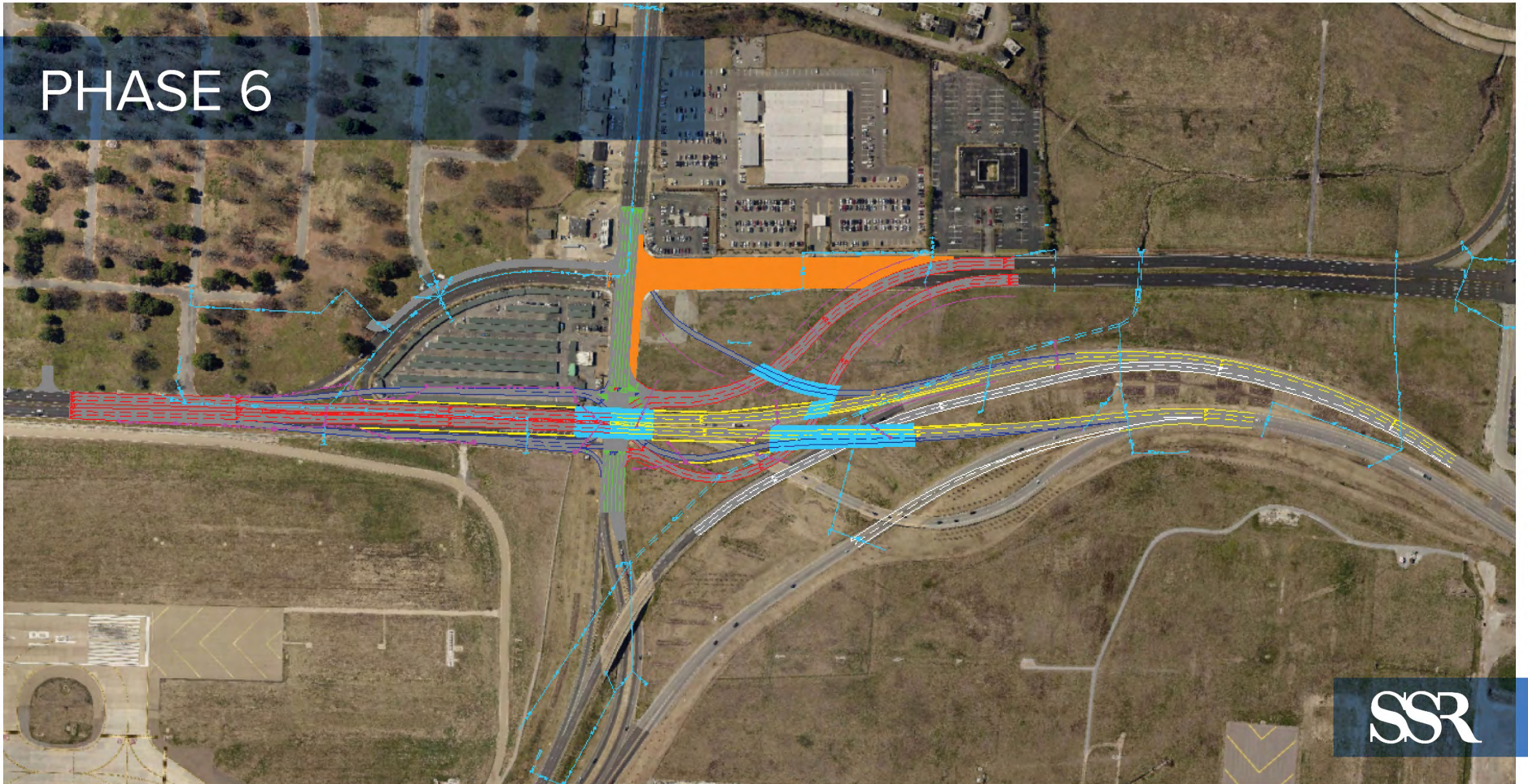
PHASE 4



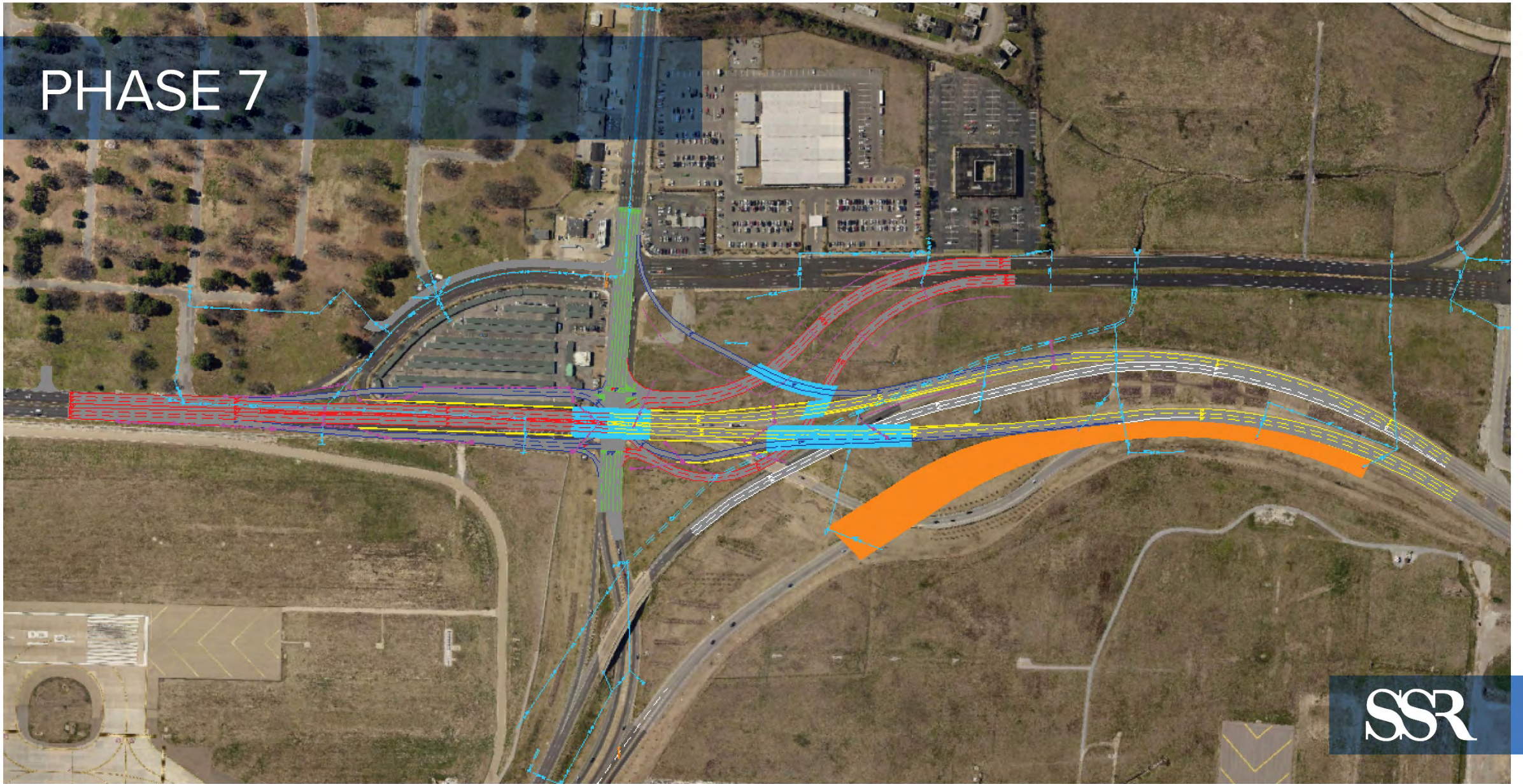
PHASE 5



PHASE 6



PHASE 7



NEXT STEPS



QUESTIONS

