



# TENNESSEE DEPARTMENT OF TRANSPORTATION

WORK ZONE FIELD GUIDE INNOVATIONS



# PROJECT TEAM



**TDOT**

- Michelle Nickerson, PE, PTOE
- Civil Engineering Manager I



**CDM Smith**

- Melody Butler, PE, AICP
- Transportation Engineer

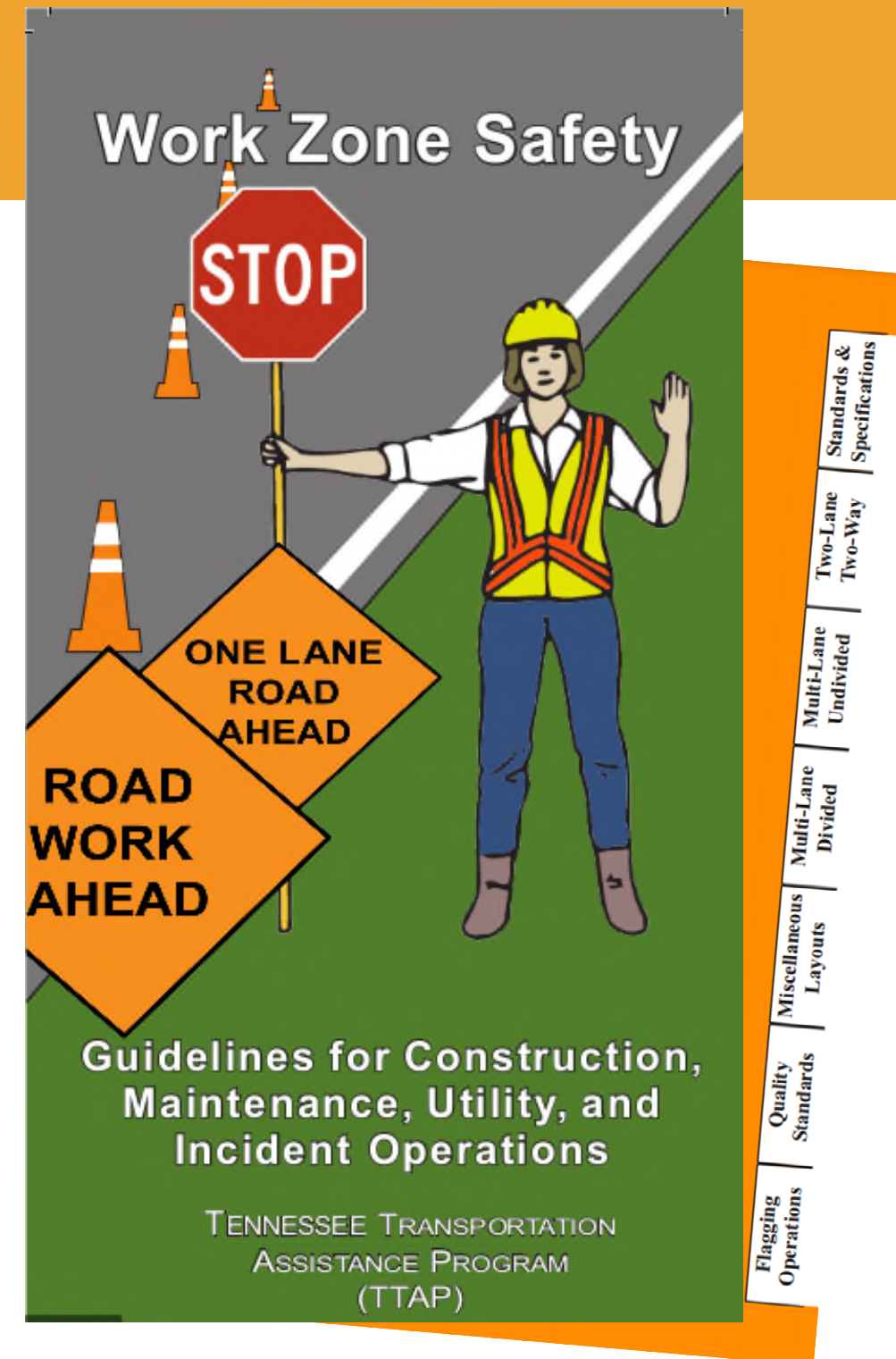


**CDM Smith**

- Brandon Denny, PE
- Transportation Engineer

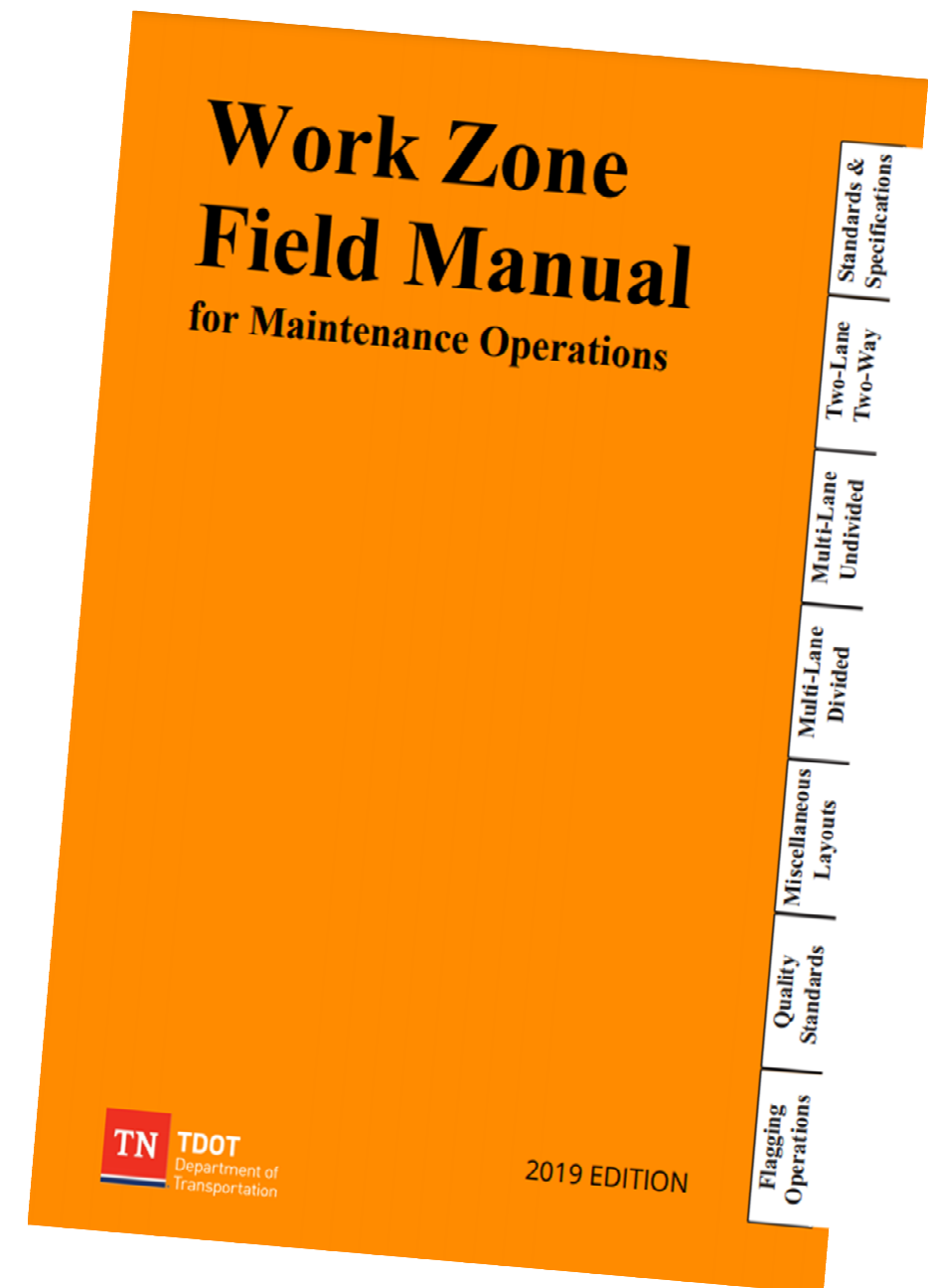
# HISTORY

- TDOT used to publish a small flipbook for common TTC layouts, but it was time for an update.
- New Work Zone Flip Book published Fall 2019, included many more layouts.
- Adapted from Minnesota Manual



# EXISTING MANUAL

- What is the problem?
  - Adapted from PDF, difficult to edit
  - Included layouts TDOT didn't use and missing others
- TDOT wanted users to take ownership and have input
- TDOT engaged CDM Smith to update the manual





# CDM SMITH INVOLVEMENT

What is a Work Zone Field Manual?

- Guide for roadway crews
- Layouts for Temporary Traffic Control Zones
- Builds off of Part 6 of the MUTCD





# CDM SMITH INVOLVEMENT

## What we thought we were getting into:

- Simple update to TDOT's existing 180-page manual
- Review other states' manuals for best practices (VA, OH, MN, TX)
- Clean up page numbers
- Cross check TDOT's work zone standard drawings to existing layouts
- Create library of typical applications using RapidPlan software
- Print 2,500 copies
- Project Deadline – October(ish) 2020

### K. The Field Manual

#### Index

	Pages
Introduction .....	.6K-i
Definition of Shall, Should, and May .....	.6K-i
Definitions .....	.6K-ii
Temporary Traffic Control General Guidelines .....	.6K-viii
Checklist for Establishing a Temporary Traffic Control Zone .....	.6K-xii
Temporary Traffic Control Devices .....	.6K-xiii
Work Zone Signing .....	.6K-xiv
Crashworthy Testing Compliance .....	.6K-xv
Guidelines for Portable Changeable Message Signs .....	.6K-xvi
Standard Abbreviations for Use on	
Portable Changeable Message Signs .....	.6K-xix
Arrow Board Specifications .....	.6K-xx
Longitudinal Drop-off Guidelines .....	.6K-xxi
Components of a Temporary Traffic Control Zone .....	.6K-xxiv
Sign Codes Quick Reference .....	.6K-xxvi
Sample Project Inspection Checklist .....	.6K-xxviii
Channelizing Devices .....	.6K-xxix
TN Pedestrian Devices .....	.6K-xxx
Symbols used in Typical Layouts .....	.6K-xxxii
Temporary Traffic Control Distance Charts .....	.6K-xxxiii
*Two-Lane, Two-Way Roads (Layouts 1 - 30) .....	.6K-1 thru .6K-30
<i>(A roadway consisting of two opposing lanes of undivided traffic.)</i>	
*Multi-Lane Undivided Roads (Layouts 31 - 43) .....	.6K-31 thru 6K-44
<i>(A roadway with two or more lanes of traffic in the same direction with no physical barrier separating the opposing traffic lanes.)</i>	
*Multi-Lane Divided Road (Layouts 45 - 66) .....	.6K-45 thru 6K-66
<i>(Two separate roadways where opposing traffic is separated by a physical barrier or median.)</i>	
*Miscellaneous Layouts (Layouts 67 - 90) .....	.6K-67 thru 6K-90
<i>(Layouts for Continuously Moving and Miscellaneous Signing Operations)</i>	
Quality Standards .....	.6K-91 thru 6K-106
Flagging Operations .....	.6K-107 thru 6K-118
Notes .....	.6K-119
TDOT Telephone Numbers .....	.6K-120 thru 6K-121

\* See inside front cover of each section for specific index to layouts.

Adapted from MNDOT Work Zone Field Manual with permission

This document as well as other work zone resources are available on the TDOT Work Zone website.

# MEETINGS WITH TDOT STAFF

## Project Kickoff Meeting – August 14, 2020

- Review scope
- Identify known issues:
  - Formatting
  - Tapers – TDOT uses “L” for all taper types (different from MUTCD)
  - Signs in MN manual that TDOT does not use
  - Flagger guidance does not match TDOT training
  - Remove any layouts designated for Local Roads
  - Need additional layouts for maintenance activities – mowing in median, slope mowing

## Brainstorming Meeting – August 27, 2020

## Steering Committee Meeting – September 8, 2020

# DO YOU THINK THE CURRENT WORK ZONE FIELD MANUAL IS EASY TO USE AND UNDERSTAND? WHAT COULD BE DONE TO MAKE IT MORE USER-FRIENDLY?

- Easy to use and understand?
  - Yes – 6
  - Depends on level of experience – 2
  - Somewhat – 1
- Comments:
  - Could have a better Table of Contents or Index
  - Show which layouts apply to tasks/activities (2)
  - Make dimensions easier to follow on layouts
  - Make less wordy
  - Better use of tabs (2)
  - Pocket guide on phone
  - Make it more of a quick reference guide (2)
  - Add all activities performed on a daily basis



# MANUAL MATERIALS PREFERENCES

- Spiral – 3
  - Binder – 4
  - Undecided – 1
  - Both – 1
- 
- Comments:
    - Current pages are difficult to make notes on
    - Materials often get tossed around in the trucks
    - Would be nice to take out pages to make copies for crew
    - Spiral is easy to open and lay flat

# REORGANIZATION OF MANUAL

- **Comments:**

- Organize in table by task and then by road type
- Include a chart with each Maintenance Activity Code which references the correct layout

Suggested Temporary Traffic Control For Work Activities	Work Activities	TA-1 pg. 19	TA-3 pg. 20	TA-4 pg. 21	TA-6 pg. 22	TA-8 pg. 23	TA-9 pg. 24	TA-10 pg. 26	TA-11 pg. 27	TA-17 pg. 30	TA-20 pg. 32
	Mowing	X			X					X	
	Pothole Patching							X	X		
	Pavement Marking/ Striping							X	X	X	
	Road Closings					X	X				X
	Road Grading							X	X	X	
	Sign Installation/ Repair	X		X							
	Tree Removal	X			X			X			
	Trenching	X	X		X			X		X	

- Create a separate “Quick Reference Guide” that would be concise and contain the most frequently used typical applications and appropriate checklists to ensure TTC is set up safely and properly. This would be a spiral bound manual that could be left in the work trucks and/or be placed in the front of the larger manual.
- Produce a more comprehensive manual with all instructions, definitions, and less frequently typical applications to be housed in the Operations Manager’s offices.

# CONTEXT SENSITIVITY

- Would like to provide a decision tree or prompt questions that help to identify which typical application to use
  - Would mainly be environmental questions such as:
    - Is there an adequate shoulder?
    - How many lanes?
    - Divided/Undivided?
    - Horizontal or vertical curves?
    - Sun position?
    - Shoulder Dropoffs?

# GUIDANCE SECTION FORMATTING

- In general, guidance is too wordy. Need to focus on providing bulleted lists and diagrams for:
  - Selecting a Typical Application layout
  - Installing/Removing TTC (with checklist)
  - TTC Devices
  - Quality Classifications and Requirements
  - Evaluation Guide: Signs, Channelizing Devices, Barricade Panels, Warning Lights, Flashing Arrow Boards, Portable Changeable Message Signs, Trailer Mounted Electronic Traffic Control Devices
  - Flagging Operations

## EVALUATION GUIDE: FLASHING ARROW BOARDS

### DOUBLE ARROW MODE



#### Acceptable condition

- An arrow board is acceptable if it meets the following conditions:
- All lamps in the stem and arrowheads are operating properly.
  - No lamps are out in the stem or arrowheads.

#### CAUTION

- An arrow board is in a caution condition if it meets the following conditions:
- All lamps in the stem and arrowheads are operating properly.
  - All lamps in the stem and arrowheads are operating properly.
  - DOT Reflective

#### Marginal

- An arrow board is in a marginal condition if it meets the following conditions:
- At least one lamp is out in the stem or arrowheads.

#### Unacceptable condition

- An arrow board is unacceptable if it meets the following conditions:
- The arrowheads are not properly illuminated.
  - The trailer-mounted electronic traffic control roadway sign is not properly illuminated.
  - The truck-mounted electronic traffic control roadway sign is not properly illuminated.
  - The arrow board is not approved by the authority having jurisdiction.

#### Unacceptable

- An arrow board is unacceptable if it meets the following conditions:
- Less than 100 feet in length.
  - Less than 100 feet in width.
  - The arrowheads are not properly illuminated.

#### Marginal

An arrow board in this mode is marginal if it meets the following condition:

- Two (2) lamps out in the stem and both heads completely functional with no lamps out.

#### Unacceptable

An arrow board in this mode is considered unacceptable if it meets any of the following conditions:

- More than two (2) lamps out in the stem,
- One (1) lamp out in the head, or
- The arrow board message is not visible at 1000 feet.

### FLASHING ARROW BOARD

#### Marginal

- An arrow board is in a marginal condition if it meets the following conditions:
- Up to two lamps out in the stem or arrowheads.

#### Unacceptable

An arrow board is unacceptable if it meets the following conditions:

- Any lamp out in the stem or arrowheads.
- More than two lamps out in the stem or arrowheads.
- The arrow board message is not visible at 1000 feet.



## WOULD YOU PREFER EACH LAYOUT SHOW THE DIMENSIONS RATHER THAN LETTERS SIGNIFYING THE DIMENSIONS THAT YOU MUST LOOK UP IN A TABLE?

- Yes – 6
- No – 1
- Not sure – 2
  
- Comments:
  - Dimensions would be easier, especially if we are getting so detailed in the layouts that we cover most circumstances
  - Letter symbols allow for one drawing to address multiple speeds, ADT, etc.
  - Show both
  - Manual should include field cues (skip lines, utility poles, etc.) to help field crews estimate distances

# MEETINGS WITH TDOT STAFF

## Brainstorming Meeting – August 27, 2020

- Included Operations Staff and Field Managers (people who use the manual regularly)
- Sent questions ahead of time to spark ideas and conversation
- Received invaluable feedback to make the manual more user-friendly
  - Main Manual
    - Includes every typical application, definitions, quality standards, etc.
    - 3-ring binder
    - Lives in Supervisor's Office
  - Quick Reference Guide
    - Include Decision Tree to determine whether a mobile or static setup is more appropriate and whether a shoulder closure or lane closure should be used
    - In general, make less wordy and condense information
    - Add dimension tables to each layout sheet

## Steering Committee Meeting – September 8, 2020

# MEETINGS WITH TDOT STAFF

## Brainstorming Meeting – August 27, 2020

- Included Operations Staff and Field Managers (people who use the manual regularly)
- Sent questions ahead of time to spark ideas and conversation
- Received invaluable feedback to make the manual more user-friendly
  - Main Manual
  - Quick Reference Guide
    - Includes most commonly-used typical applications, activity matrix, and check lists
    - Spiral-bound
    - “Rite in the Rain” paper
    - Durable materials that can be thrown in field trucks
  - Include Decision Tree to determine whether a mobile or static setup is more appropriate and whether a shoulder closure or lane closure should be used
  - In general, make less wordy and condense information
  - Add dimension tables to each layout sheet

## Steering Committee Meeting – September 8, 2020

**GENERAL ACTIVITY**

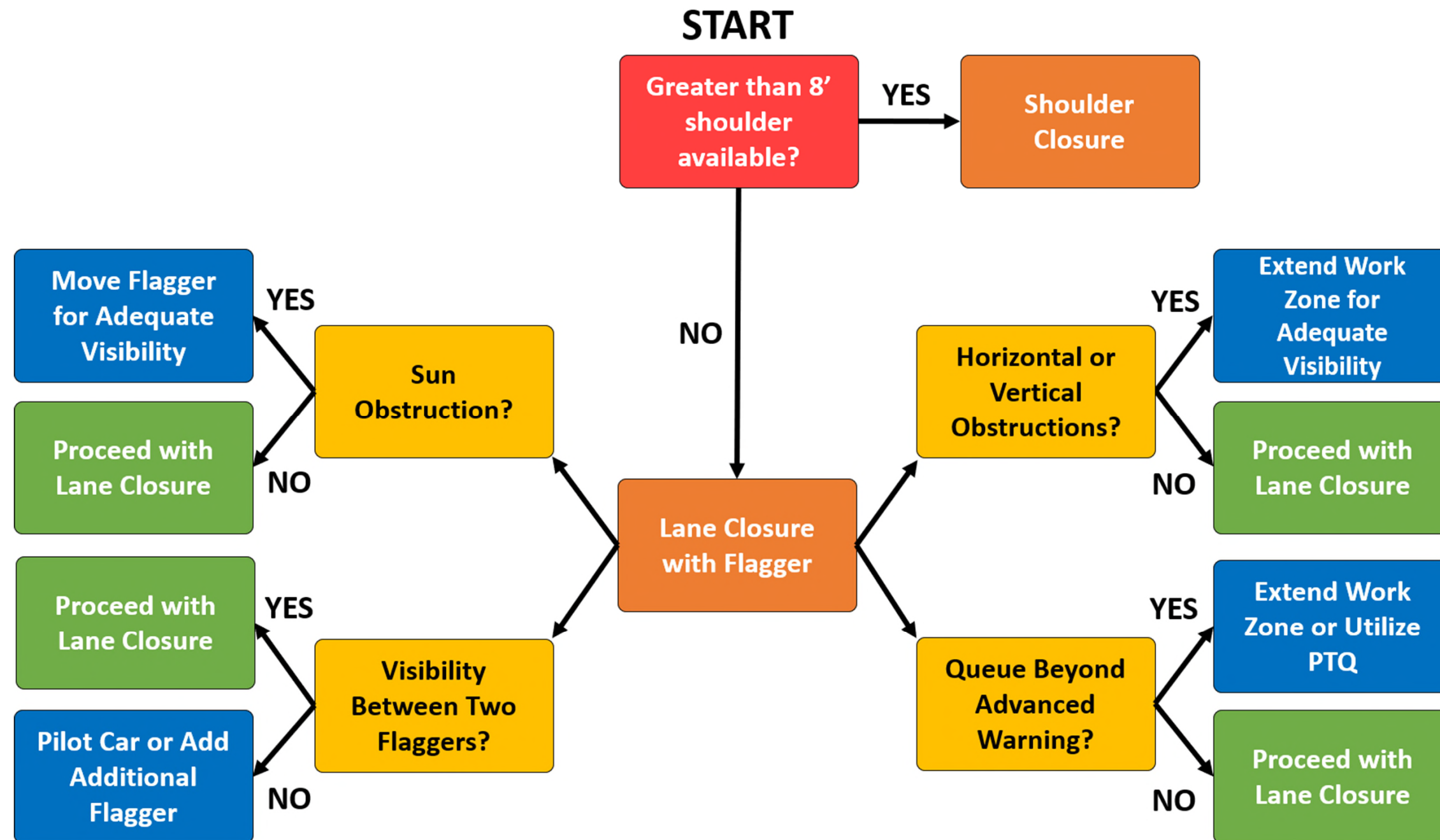
	POTHOLE REPAIR	PAVING ACTIVITIES	SHOULDER MAINTENANCE	STORM SEWER MAINTENANCE	ROW/BOOM/SLOPE MOWING	LITTER/ANIMAL/LARGE DEBRIS CLEARING	OFF-SHOULDER MAINTENANCE	STREET CLEANING	BRIDGE REPAIR	PAVEMENT MARKING/STRIPING	GUARDRAIL/CRASH REPAIR	SINKHOLE/SLOPE REPAIR	EMERGENCY MANAGEMENT	CHEMICAL APPLICATION/SPRAYING
(4) Shoulder Closure			X	X	X	X			X		X	X	X	X
(5) Off Shoulder				X	X	X	X				X	X		X
(8) 2-Lane Mobile Lane Closure		X			X			X		X				X
(9) 2-Lane Stationary Lane Closure	X	X	X	X		X			X	X	X		X	
(20) Multi-Lane Undivided Left Lane Closure	X	X				X				X			X	
(21) Multi-Lane Undivided Outside Lane Closure	X	X	X	X		X			X	X	X		X	
(23) Multi-Lane Divided Mobile Shoulder > 8ft Closure	X		X		X	X								X
(24) Multi-Lane Divided Mobile Shoulder < 8ft Closure	X		X		X	X								X
(25) Multi-Lane Divided Mobile Lane Closure		X			X			X		X				X
(26) Freeway Mobile Double Lane Closure	X	X												
(28) Multi-Lane Divided Short Duration Lane Closure					X			X						X
(29) Multi-Lane Divided Outside Lane Closure Nighttime	X		X	X					X		X		X	

**TYPICAL APPLICATION**

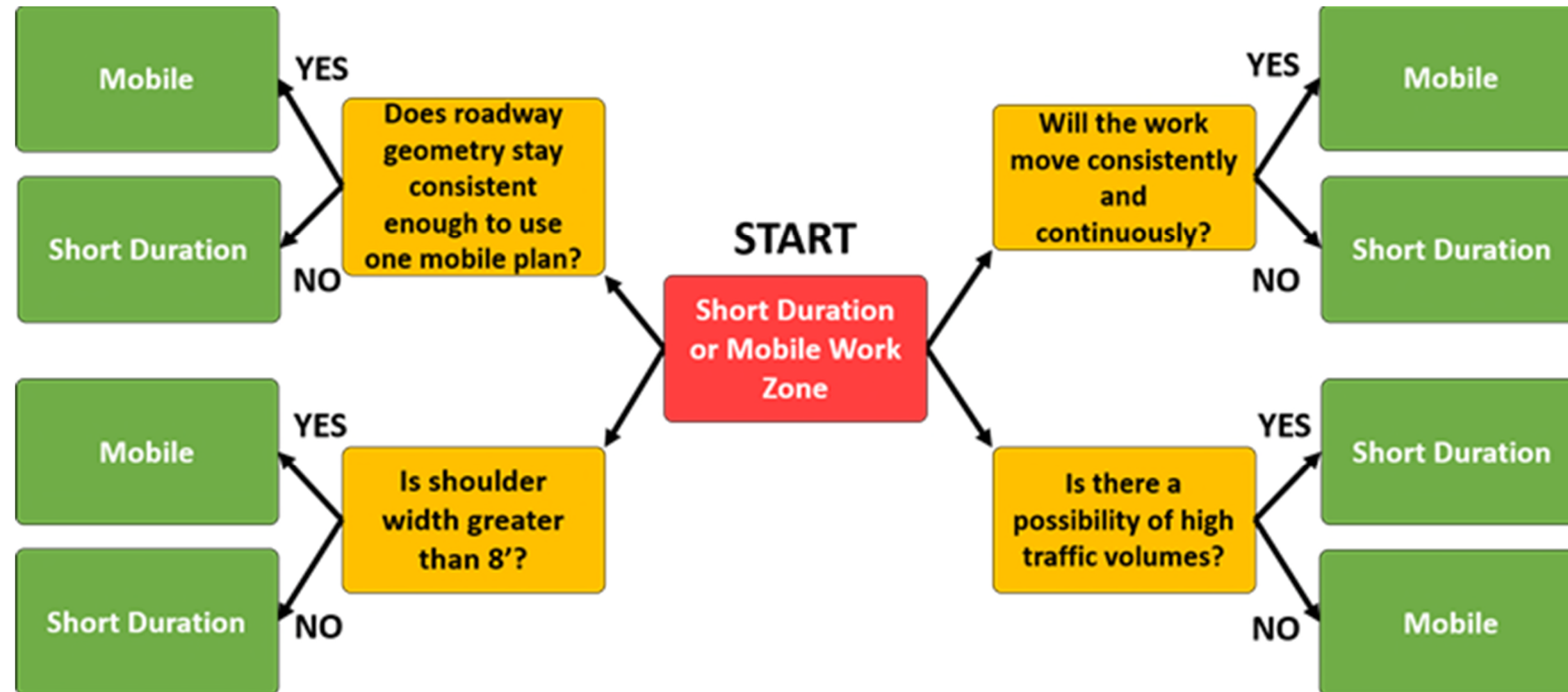
**UPDATED  
MANUAL –  
ACTIVITY  
MATRIX**



# UPDATED MANUAL – DECISION TREE



# UPDATED MANUAL – DECISION TREE



## Flashing Arrow Boards

### Flashing Arrow Mode

#### Acceptable

Acceptable Flashing Arrow Mode meets all of these conditions:

- All lamps properly aligned for the intended driver's line of vision.
- No lamps are burnt out.
- All lamps dim properly.
- All lamps are the same level of intensity.



#### Marginal

Marginal Flashing Arrow Mode meets this condition:

- Up to two (2) lamps are out in the stem and no lamps out in the head.



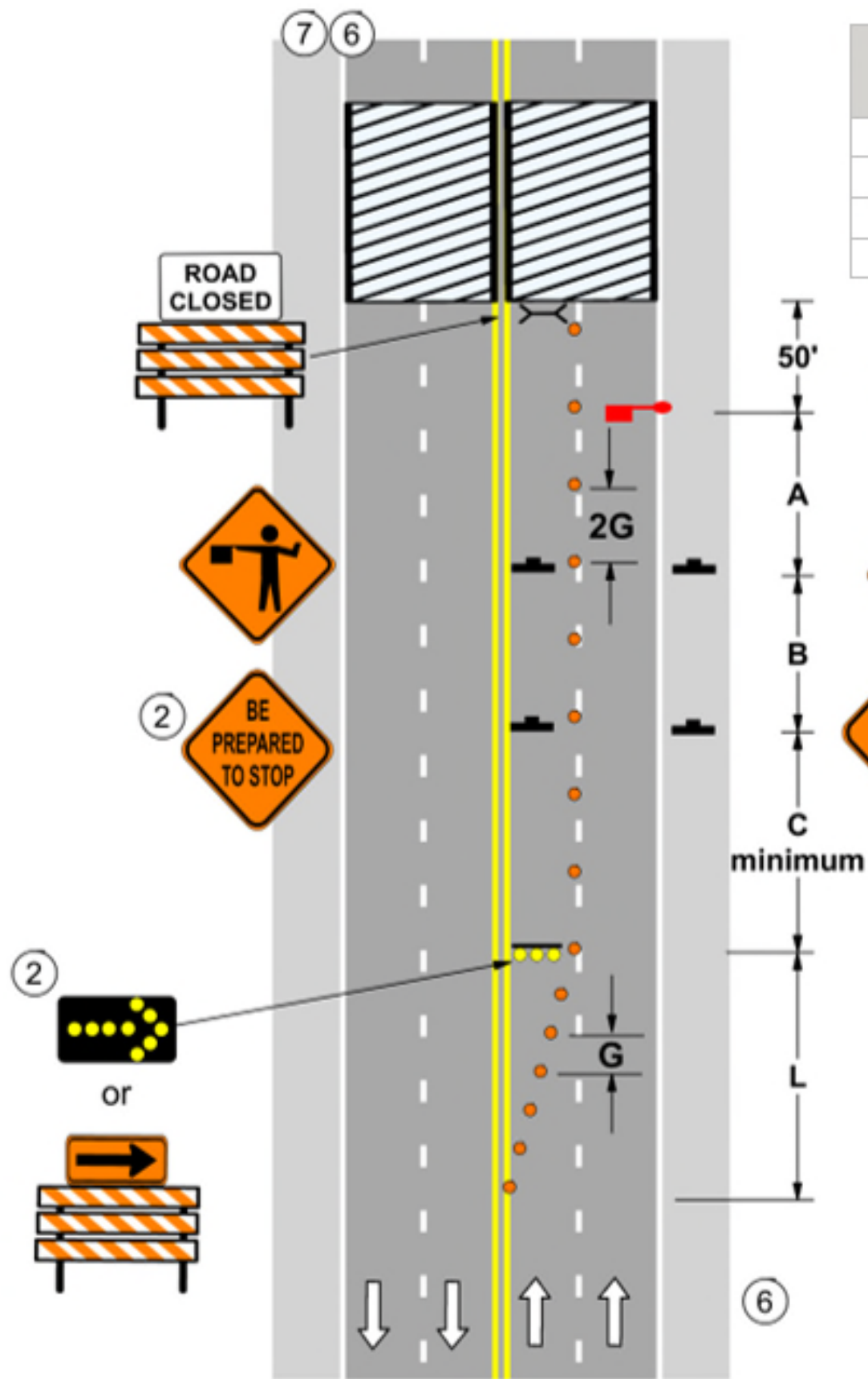
#### Unacceptable

Unacceptable Flashing Arrow Mode meets any of these conditions:

- Any lamp out in the head.
- More than two (2) lamps out in the stem.



# UPDATED MANUAL – CONDENSE INFORMATION



Road Type	Advance Warning (ft)		
	A	B	C
Urban < 45 mph	100	100	100
Urban ≥ 45 mph	350	350	350
Rural	500	500	500
Expressway/Freeway	1,000	1,500	2,640

Posted Speed	Taper Length (L) (ft)	Decision Sight Distance (D) (ft)
30	180	620
35	260	720
40	320	820
45	660	940
50	720	1040
55	780	1140
60	840	1280
65	900	1380
70	960	1480
75	1020	1580

Posted Speed	Channelizing Device Spacing (ft)	
	G	2G
< 45	20	40
≥ 45	40	80

# UPDATED MANUAL – DIMENSIONS ON LAYOUTS



# TDOT REFERENCES

- Personal Protective Equipment (PPE) Policy
- Warning Light Manual
- Manual on Uniform Traffic Control Devices
- TDOT Standard Operating Guide (SOG) 477-01
- Truck and Trailer Mounted Attenuators Manual
- 4Us Checklist
- Temporary Portable Rumble Strip Evaluation Guideline
- Automated Flagging Assistance Device Evaluation Guideline
- Flagging Guidance Training Presentation
- Protect the Queue SOG
- Protect the Queue Guidance Presentation

# TDOT REVIEW



Regions



Operations Staff



Safety Office

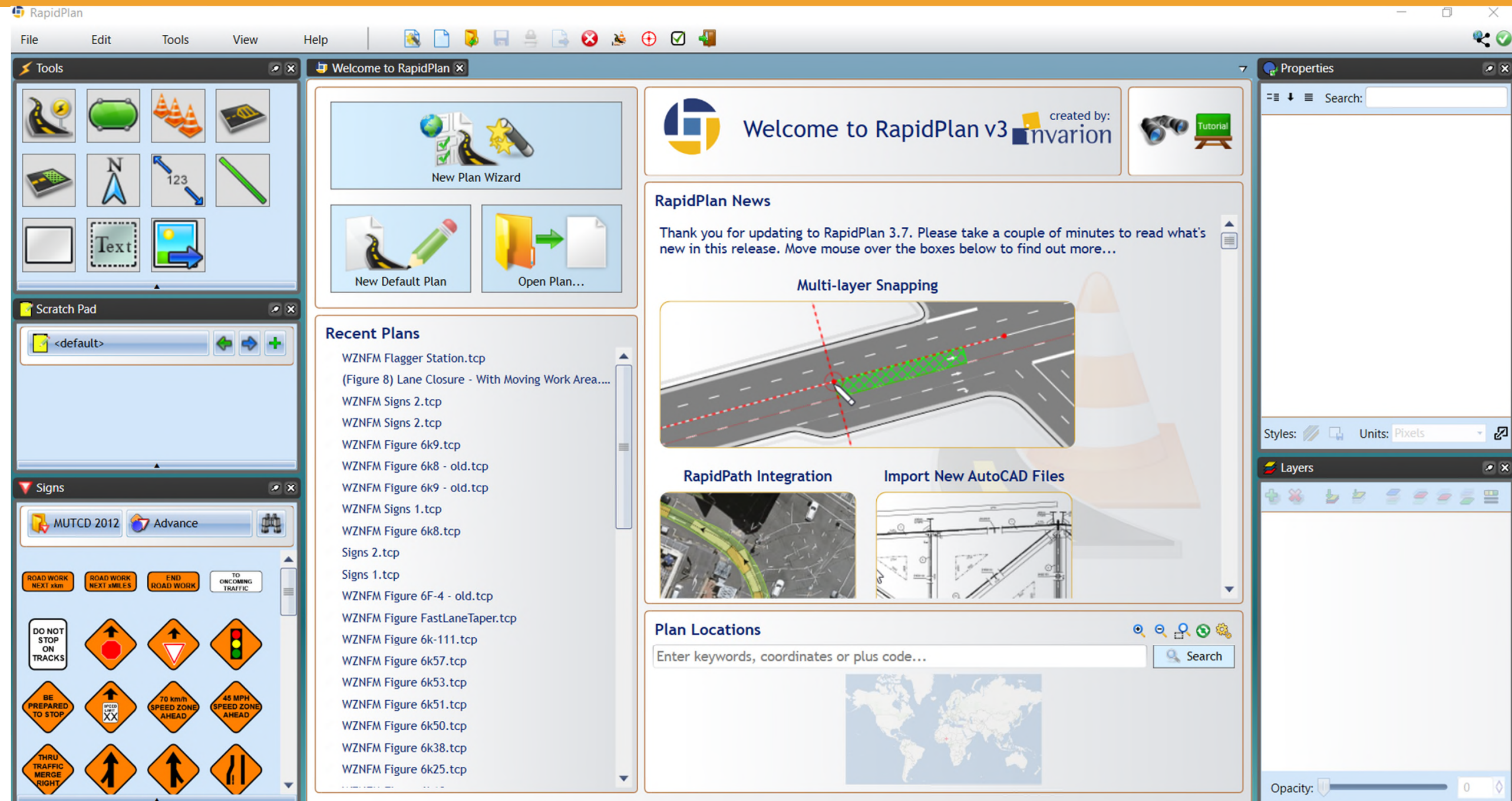


Traffic  
Engineering



FHWA

# CREATING LAYOUT GRAPHICS

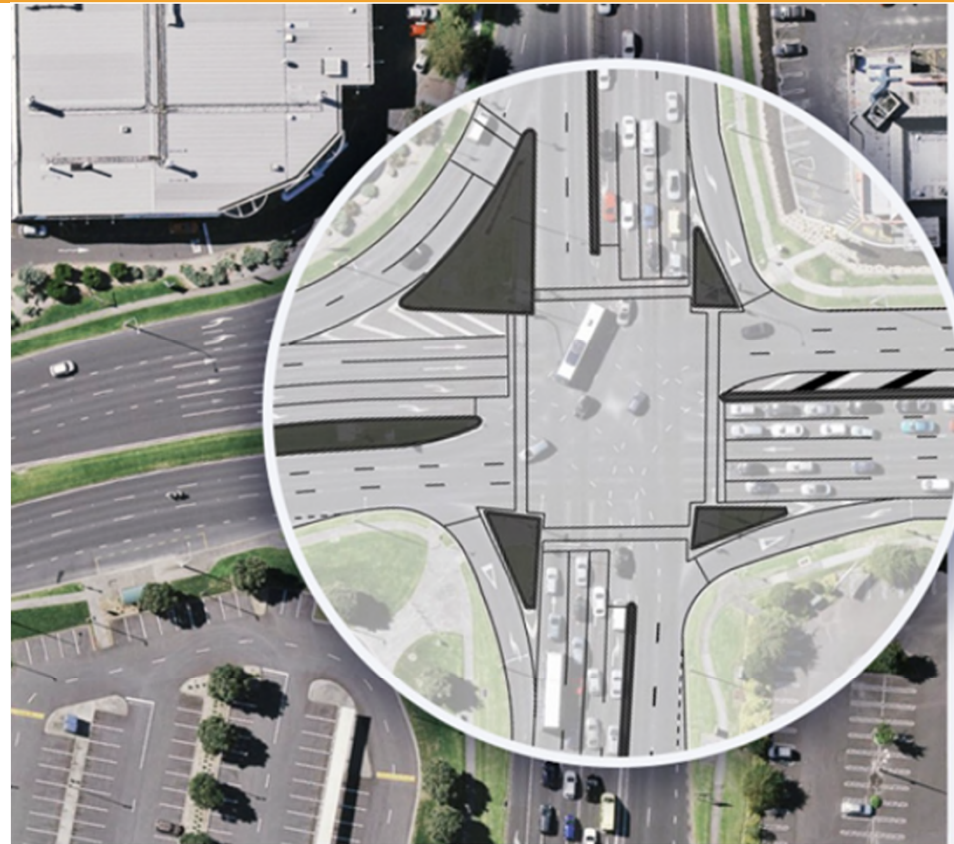






# RAPIDPLAN CAPABILITIES

- Draw over aerial imagery
- Import pre-drawn road layouts of existing roadways
- Import CAD files, export to CAD
- **Utilize pre-loaded sign libraries**
- **Utilize pre-loaded templates**



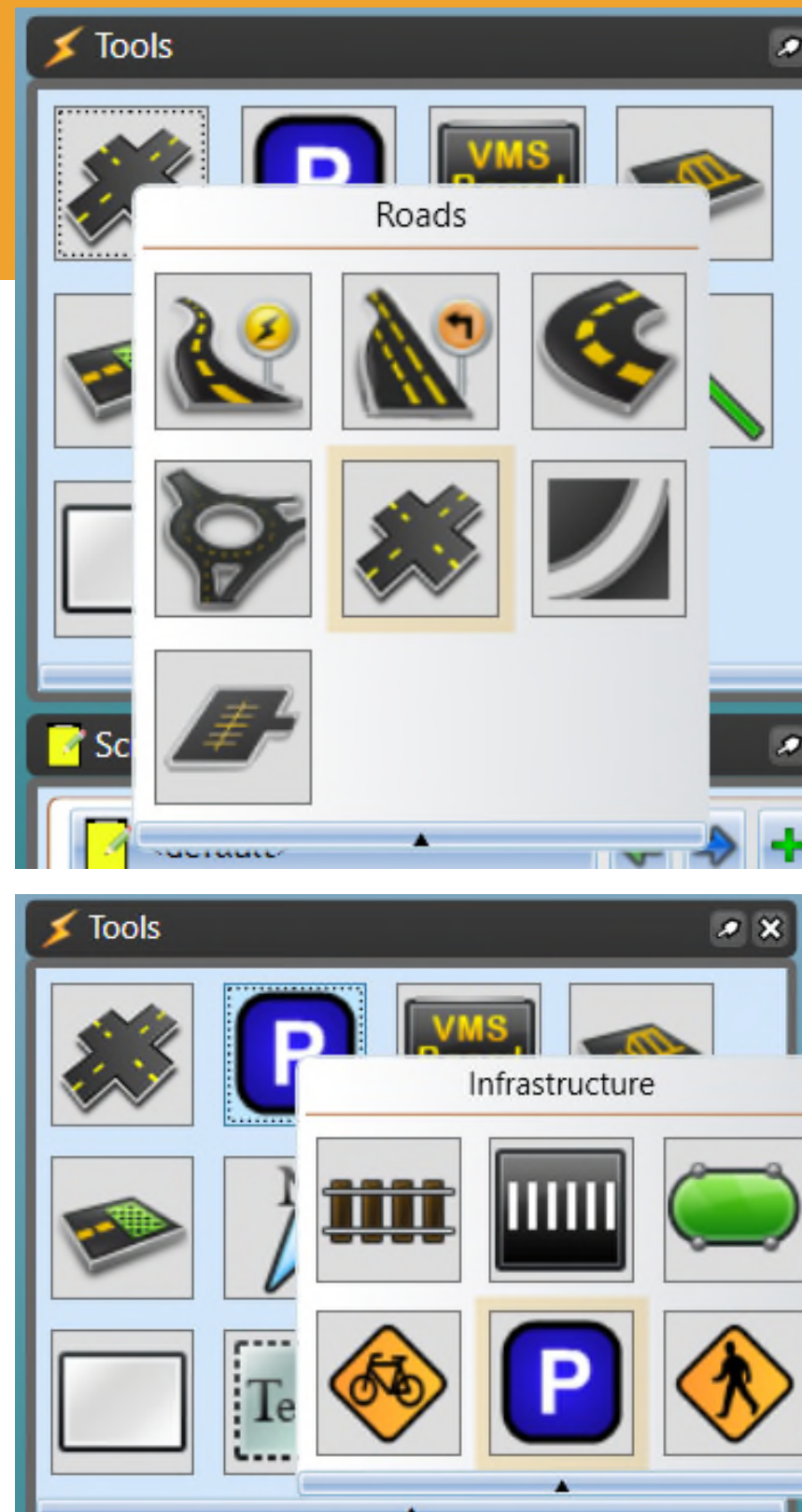




# PROS/CONS

## Pros:

- With limited background, easy to jump in
- Simple, intuitive interface
- Full roads with various marking types can be drawn with a simple click from pre-loaded templates
- Easy to share and adjust files for future changes



## Cons:

- Creating is easier than printing
- Sign library can be limited/misaligned with MUTCD
- Equipment symbols are limited

## Pro/Con

- Help is setup as video tutorials

# CDM SMITH INVOLVEMENT

What we actually did:

**LEARNED A LOT ABOUT COMMUNICATION!**