

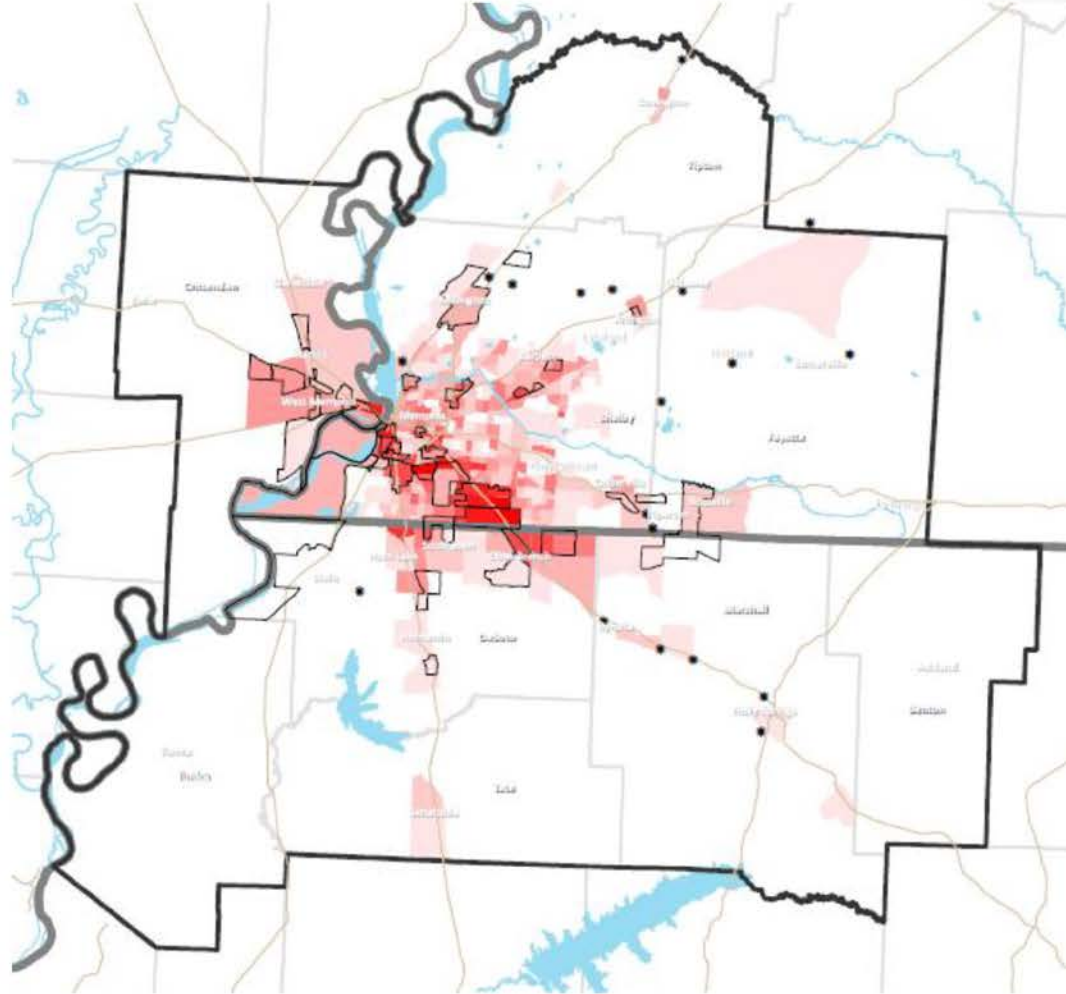


# Lamar Corridor Memphis

Stephen Edwards, PE  
City of Memphis

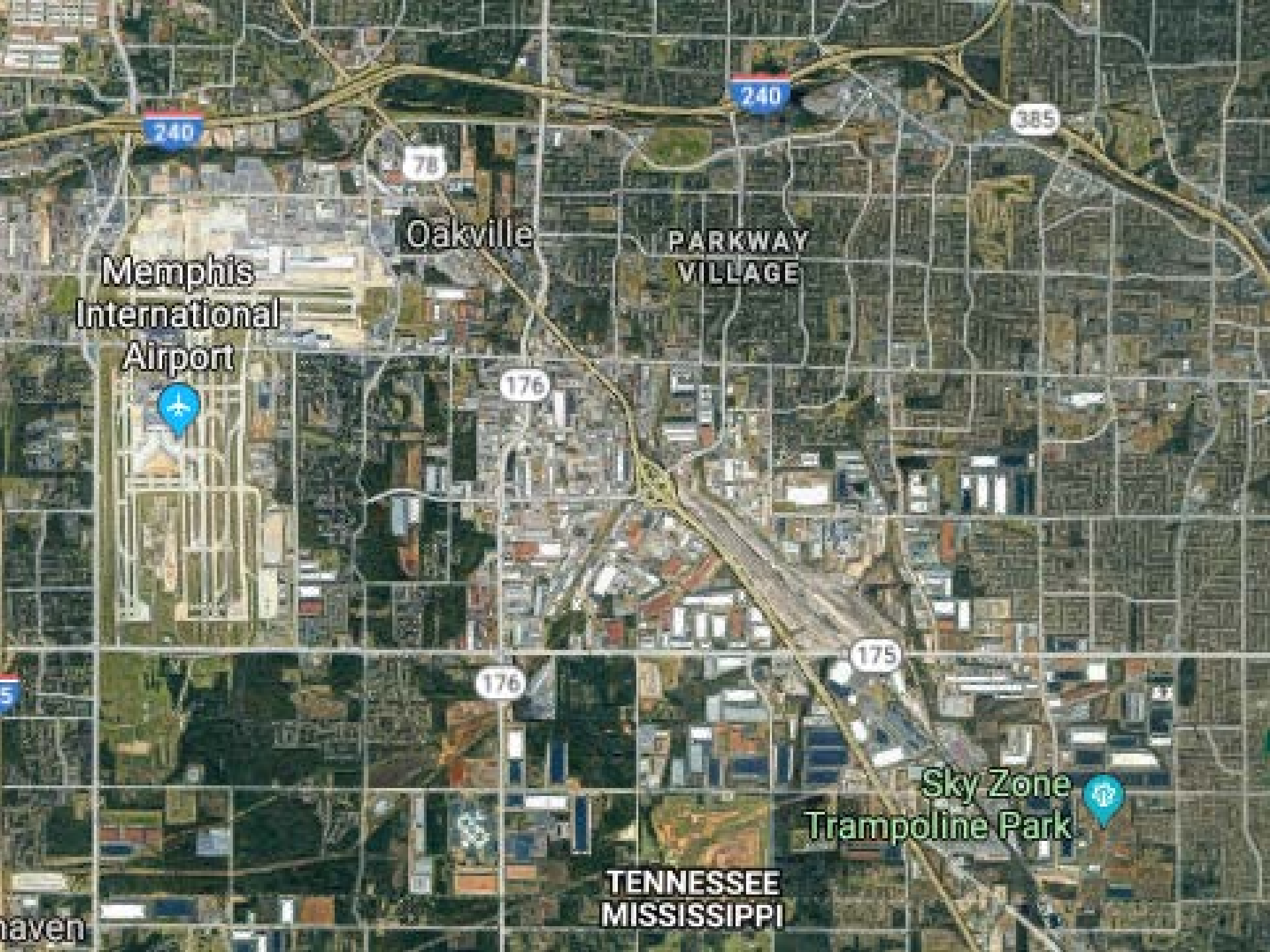
# The Problem?

1. Over **98.7 million square feet** of industrial space
2. 1,100 transportation, distribution, and logistics companies
3. Over **40,000** vehicles per day estimated to increase to 64,000 by 2040 – **Majority Truck Traffic**
4. BNSF expansion - **\$285 million**
5. Cost of the project: **\$300 million**









Memphis  
International  
Airport

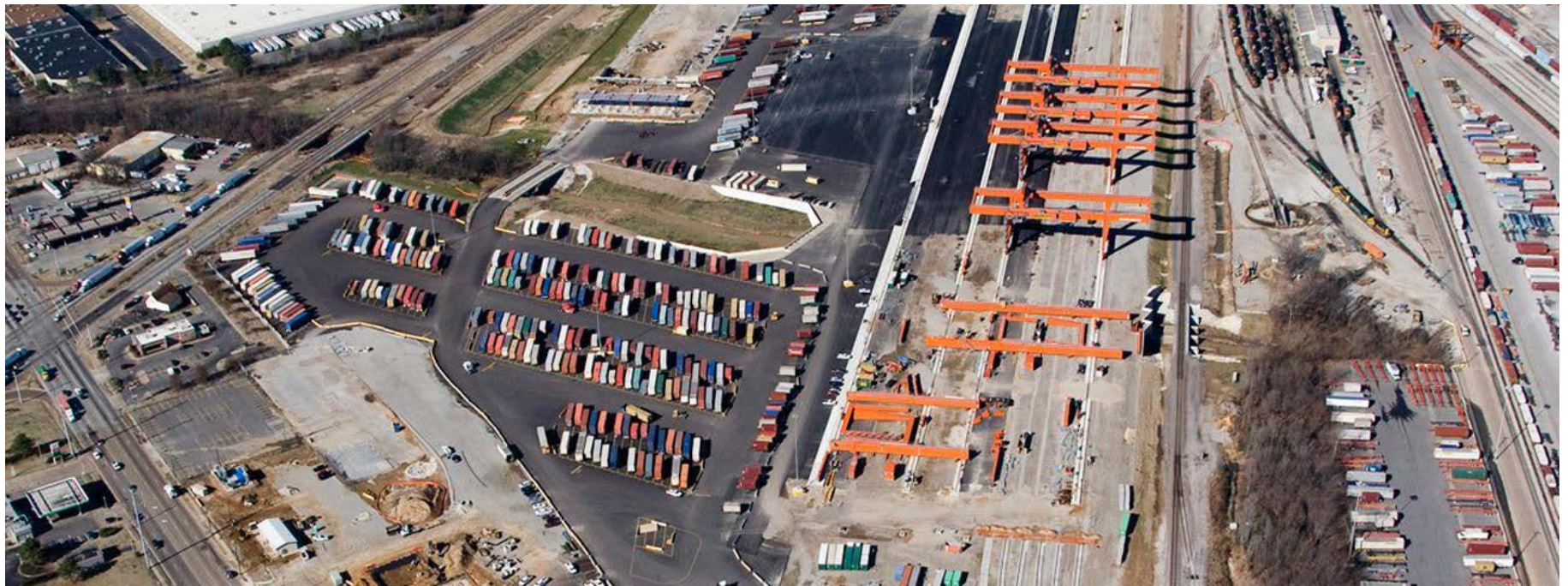
Oakville

PARKWAY  
VILLAGE

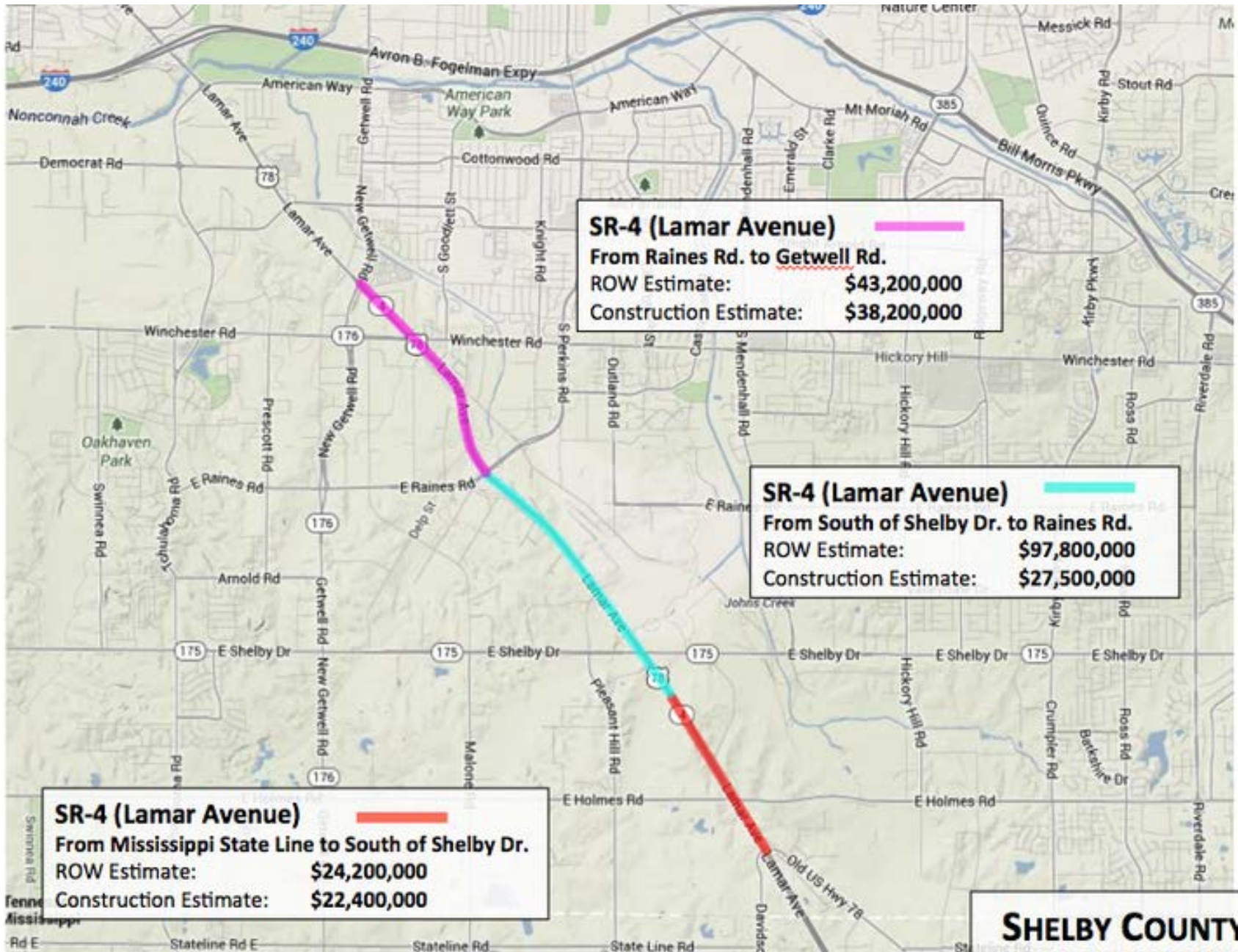
Sky Zone  
Trampoline Park

TENNESSEE  
MISSISSIPPI









**SHELBY COUNTY**

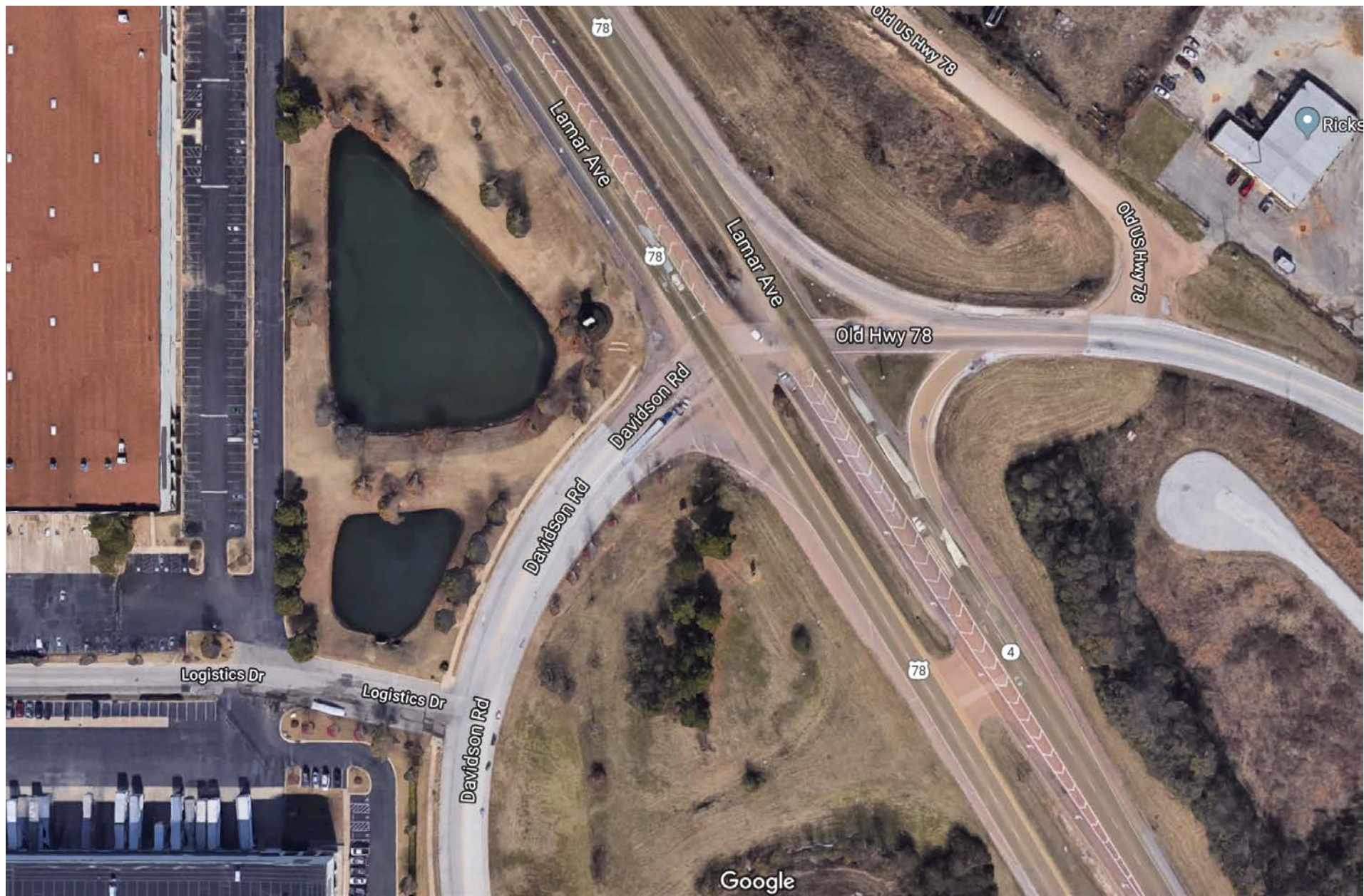




Map labels include:

- Companies: Baxter Healthcare, AAA Cooper Transportation, Creative Co., Kroger Delta Memphis Distribution Center, US Foods, Bryce Corporation, Pharmedium Ser, Hub Group Trucking, SDR Trucking, Core & Main, Crow's Truck Services, Menlo Worldwide Logistics, Quality Roofing Contractors of SEMO, Geodis Ozburn-Hessey Logistics, Bilingual Academy, Intermodal Cartage Group (IMCG), Ford Motor, AS Barboro, Jabil Circuit, Yazaki North America, Technicolor, General Motors, Kinney Milling Company, Marter Transport, JB Hunt Transport Services, Inc.
- Roads: Pleasant Hill Rd, E Holmes Rd, Lamar Ave, Hickory Hill Rd, Old Hwy 78, Davidson Rd, CAPLEVILLE Rd.
- Geographic Features: Johns Creek.





78

Lamar Ave

78

Lamar Ave

Old US Hwy 78

Old US Hwy 78

Old Hwy 78

Davidson Rd

Davidson Rd

Logistics Dr

Logistics Dr

Davidson Rd

78

4

Google

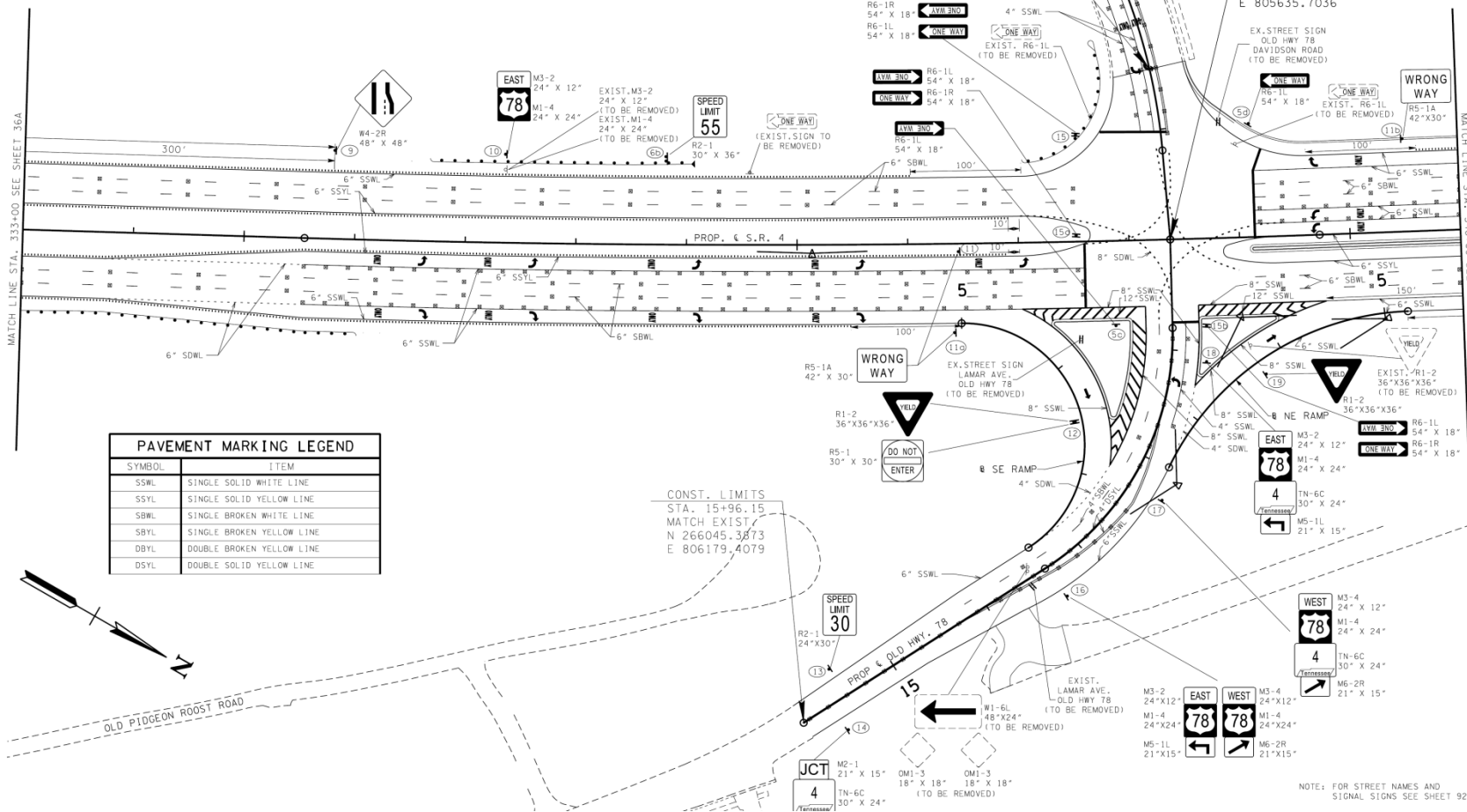
Ricks



335

340

345







4

78

Lamar Ave

E Holmes Rd

E Holmes Rd

E Holmes Rd

78

Lamar Ave

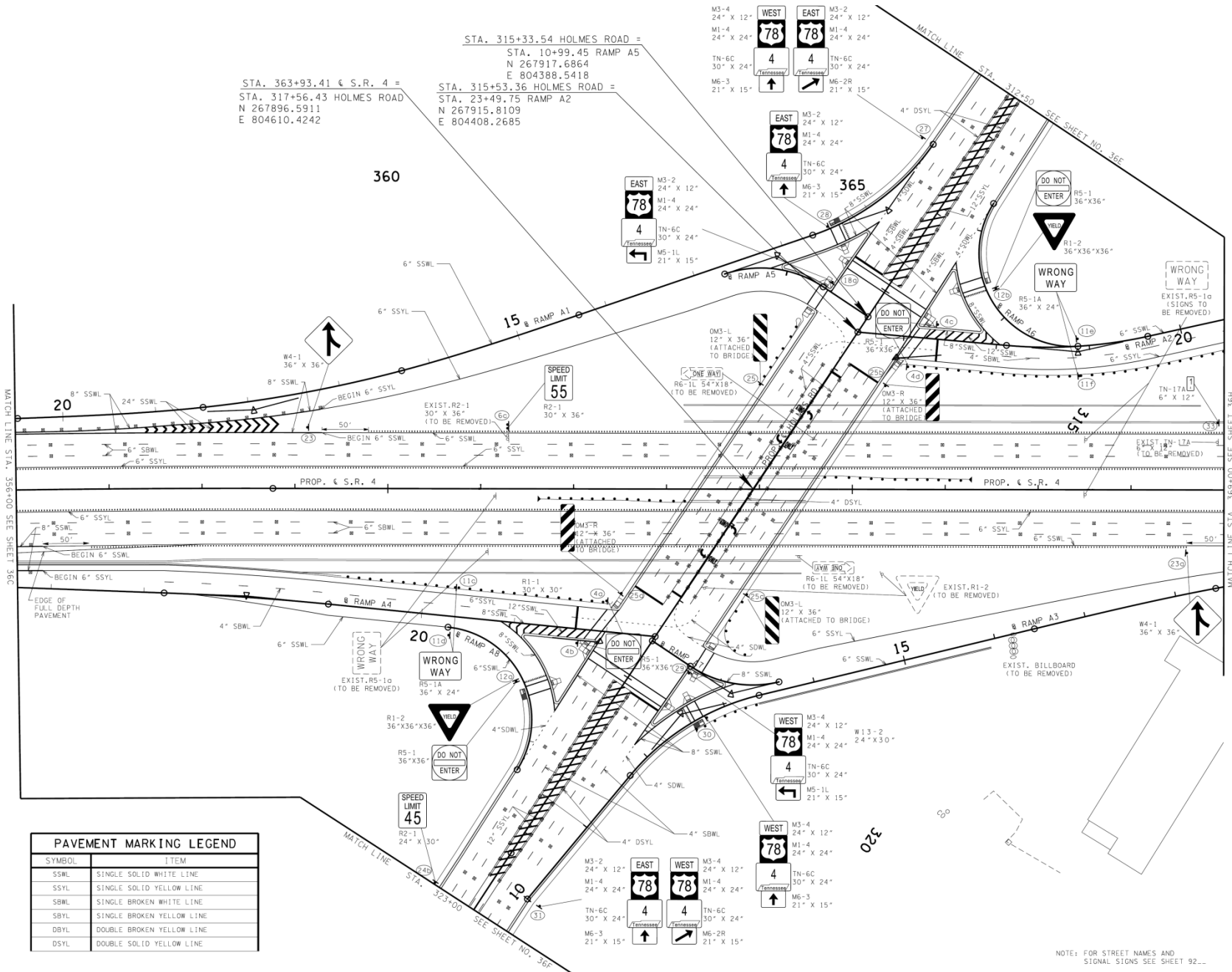
4



STA. 363+93.41 € S.R. 4 =  
 STA. 317+56.43 HOLMES ROAD  
 N 267896.5911  
 E 804610.4242

STA. 315+33.54 HOLMES ROAD =  
 STA. 10+99.45 RAMP A5  
 N 267917.6864  
 E 804388.5418

STA. 315+53.36 HOLMES ROAD =  
 STA. 23+49.75 RAMP A2  
 N 267915.8109  
 E 804408.2685



PAVEMENT MARKING LEGEND	
SYMBOL	ITEM
SSWL	SINGLE SOLID WHITE LINE
SSYL	SINGLE SOLID YELLOW LINE
SBWL	SINGLE BROKEN WHITE LINE
SBYL	SINGLE BROKEN YELLOW LINE
DBYL	DOUBLE BROKEN YELLOW LINE
DSYL	DOUBLE SOLID YELLOW LINE

NOTE: FOR STREET NAMES AND SIGNAL SIGNS SEE SHEET 92...



# QUESTIONS?

[Stephen.Edwards@memphistn.gov](mailto:Stephen.Edwards@memphistn.gov)