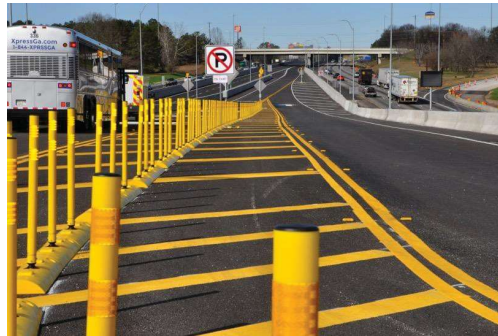




## Georgia Express Lanes Success

A brief overview  
July 2019  
Meg Pirkle, P.E.,  
Chief Engineer



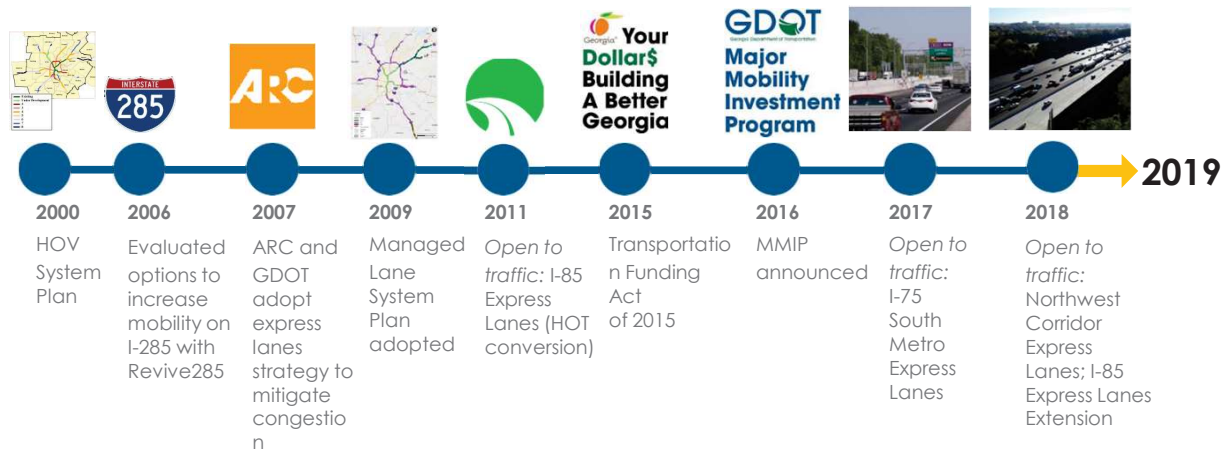


## Agenda

- Georgia Express Lanes
- I-75 South Metro Express Lanes
- I-85 Express Lanes Extension
- Northwest Corridor Express Lanes

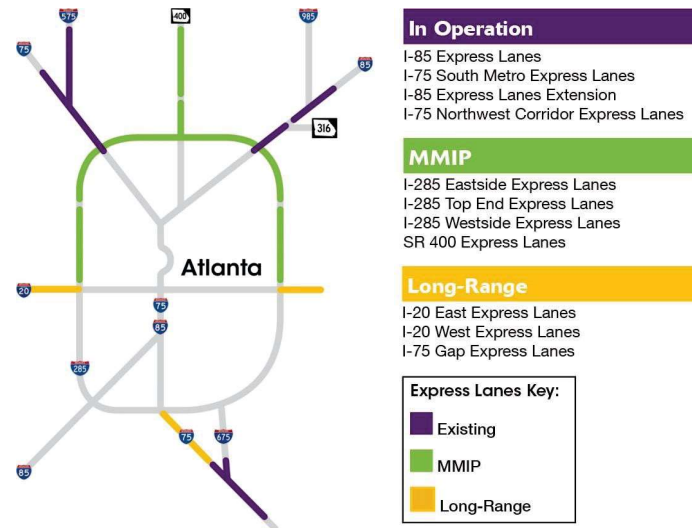


## Express Lanes Vision





## Georgia Express Lanes Network





## Express Lanes ROI



**\$1.13 benefit**  
for every  
**\$1 invested**



**44%** reduction in  
transit vehicle travel  
time



**38%** travel time relief  
in 2040



**8%** reduction in  
traffic fatalities/  
serious injuries



**10%** fleet  
cost reduction



**40** minutes in  
planning time  
savings



**9%** drop in  
pollution due to  
less congestion/  
faster travel times

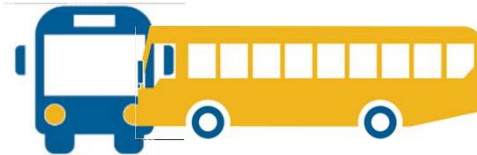


## Express Lanes Benefits



**More Reliable** Travel Times

**More Consistent** Travel Speeds



**Enhanced Transit**  
Options and Opportunities



## Mobility Partnerships



Responsible for planning, constructing, maintaining, and improving the state's roads, bridges, and interstates.



Metro Atlanta transit operators are responsible for operations of various transit options available including heavy rail, light rail, and bus transit system and the advancement of transit in the metro area.



Collects toll revenue and responsible for operations for express lane systems within Georgia.





## I-75 South Metro Express Lanes







## I-75 South Metro Express Lanes

- Opened to traffic in 2017
- 12.5 miles along the median
- Reversible system





## I-75 South Metro Express Lanes Success



Total trips: **6.5 million**



Travel **speeds are 38% faster** in the express lanes than in the general purpose lanes



Average daily fare: **\$0.91**



Weekday trip average: **9,032**

## I-85 Express Lanes Extension





## I-85 Express Lanes Extension

- Opened to traffic in 2018
- Extended the existing I-85 Express Lanes 10 miles north
- Original I-85 Express Lanes opened in 2011 as HOT lanes for 16 miles





## I-85 Express Lanes Success



Total trips: **56.7 million**



Travel **speeds are 25% faster** in the express lanes than in the general purpose lanes



Average daily fare (I-85): **\$3.44**  
Average daily fare (Extension): **\$0.49**



Daily trip average: **29,049**

*Data includes both the original corridor and the extension*



## Northwest Corridor Express Lanes



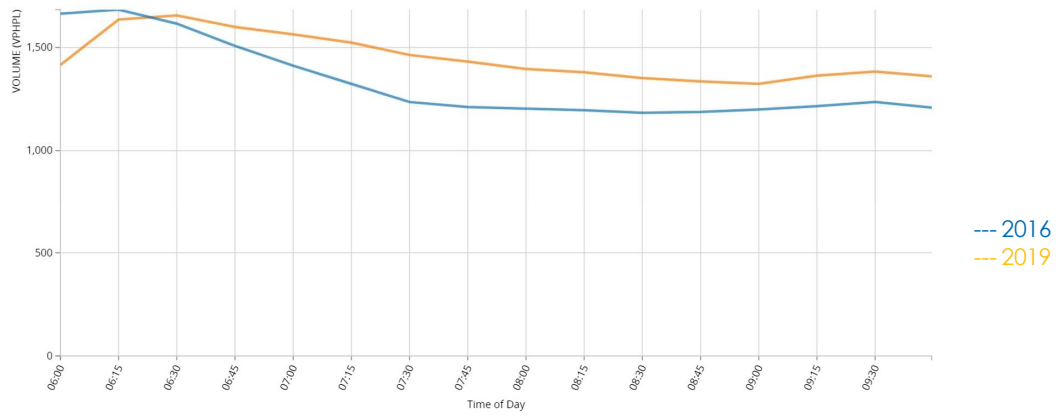


## Northwest Corridor Express Lanes

- Opened to traffic in 2018
- 29.7 miles
- Most innovative express lanes system in the country
  - Multi-agency collaboration
  - Public-private partnership
  - Two interstates
  - Reversible system
  - Elevated and at-grade
  - Reversible

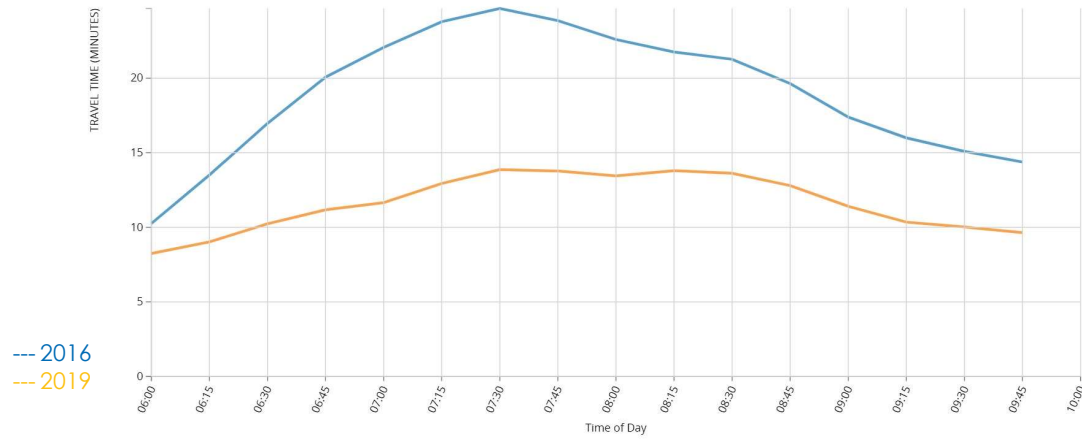


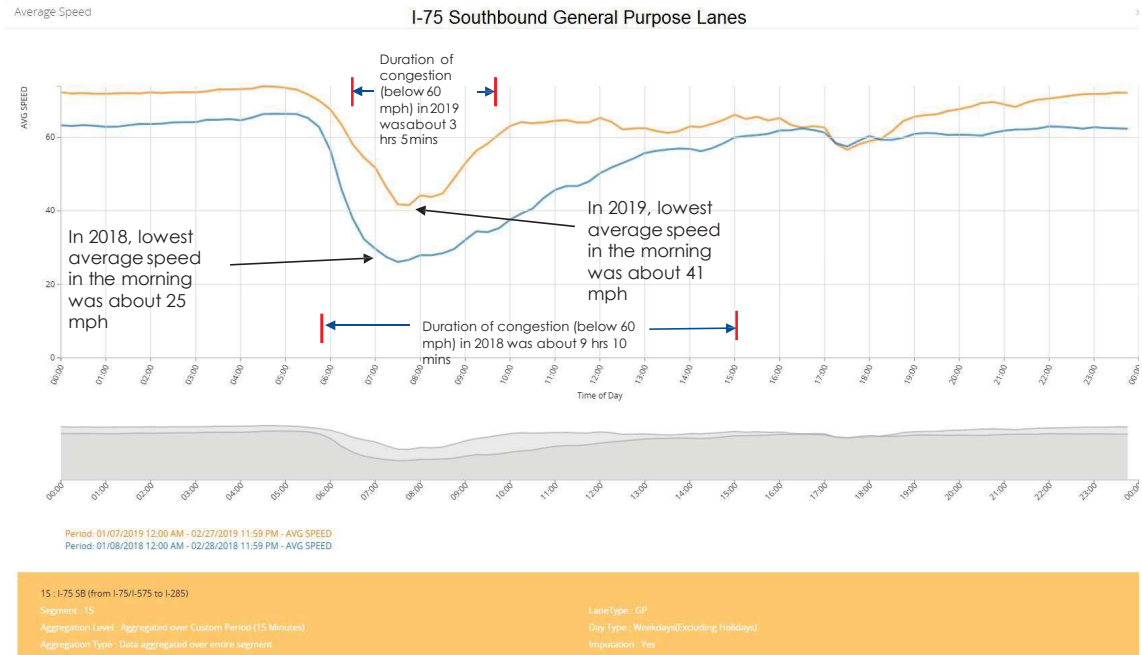
### I-75 SB from I-575 to I-285 Volume Comparison





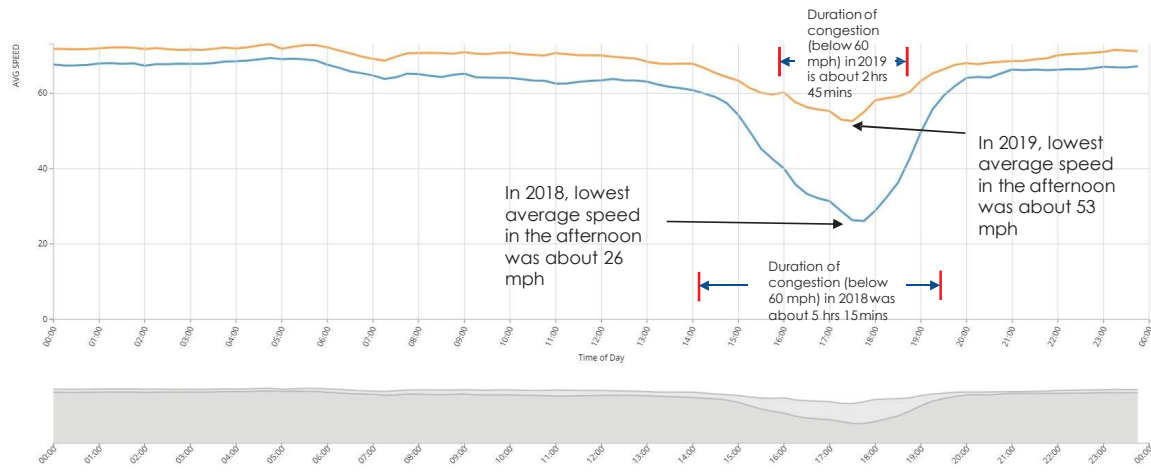
## I-75 SB from I-575 to I-285 Travel Time Comparison





Average Speed

I-75 Northbound General Purpose Lanes



Period: 01/07/2019 12:00 AM - 02/27/2019 11:59 PM - AVG SPEED  
 Period: 01/08/2018 12:00 AM - 02/28/2018 11:59 PM - AVG SPEED

1N: I-75 NB (from I-285 to I-75A-575)

Segment: 1N

Aggregation Level: Aggregated over Custom Period (15 Minutes)

LaneType: GP

Day Type: Weekdays(Excluding Holidays)

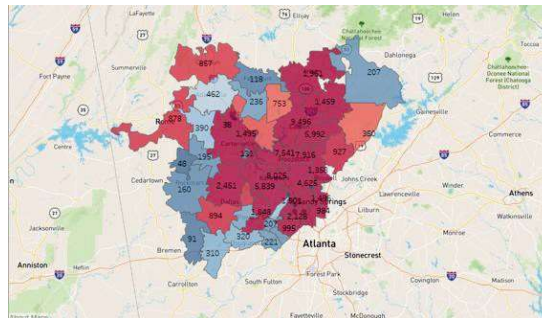
## Typical Reversal Durations



I-75 South Metro Corridor: 45 minutes

Northwest Corridor: 90 minutes

## Northwest Corridor User Base



These zip codes have the most active PeachPasses on the NWC.

(



## Northwest Corridor Express Lanes Success



Rush hour has been reduced by over **1 hour** in both the morning and evening commutes



Total trips: **5.2 million**



Travel **speeds are 30% faster** in the express lanes than in the general purpose lanes



Average daily fare: **\$2.32**



Weekday trip average: **25,500**



GP lanes are up to **20 mph faster** than they were before the express lanes opened



THANK  
**YOU**  
For Viewing



@GeorgiaDOT



@GADeptofTrans



@gadeptoftrans



[www.dot.ga.gov/MMIP](http://www.dot.ga.gov/MMIP)

